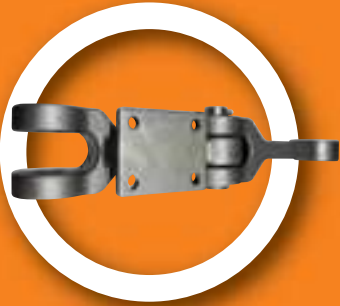
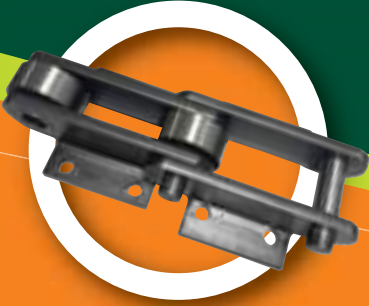




4B GROUP  
[www.go4b.com](http://www.go4b.com)



## Chains & Sprockets for the sugar industry

- Wash & Feed Table Chains
- Main & Auxilliary Cane Carrier Chains
- Shredded Cane Carrier Chains
- Intermediate Carrier Chains
- Cush Cush/Bagacilio Elevator Chains
- Pressure Feeder Roller Drive Chains
- Diffuser Chains
- Bagasse Elevator, Conveyor & Reclaim Chains
- Bagasse to Boiler Leveller Chains
- Dry & Wet Sugar Elevator Chains

## 4B Your Material Handling Specialists!

### A Worldwide Market Leader

4B is an engineering firm dedicated to the Bulk Material Handling Industry. With 6 subsidiaries and representatives in over 40 countries, 4B has grown to be a worldwide market leader in the provision of innovative, high quality, dependable material handling products and engineering services.

### A wealth of Experience

4B looks back on over 125 years of engineering experience. With subsidiaries in Europe, North America and Asia, and a worldwide network of distributors, 4B draws on a wealth of experience to provide cost-effective practical solutions for all types of applications in any given locations.

### An extensive range of Material Handling Components

4B has become an important supplier of bulk handling components, including bucket elevator and conveyor components, electronic monitoring equipment, and a full range of high quality conveyor chains. Ensuring our clients have safe reliable and efficient conveying systems is a 4B priority, whilst research and development maintain 4B products at the leading edge of technology.

### A range of chains that can't be beaten on quality

4B's chains are recognised to be among the best on the market and have a track record of performing well, in projects around the world.

4B's drop forged chains for drag and en-masse chain conveyors are ultra shock and wear resistant and suitable even for the toughest applications.

4B sugar chains represent an expansion of the company's conveyor chain range. Engineered in a range of constructions, including welded steel chains, engineered steel chains, steel bush chains, forged fork link chains, bagasse chains and more, 4B's sugar chain range satisfies all Sugar Mill chain requirements all the way throughout the process.

### A breadth of Technical Support

4B offers free and guaranteed worldwide technical support from a team of experienced engineers specializing in the design of elevators and conveyors. In a commitment to the industry we have designed countless new elevators and conveyors and upgraded many more existing facilities. We believe our engineering services are as valuable and important as our products themselves.

4B is proud of the personal attention with which we serve our clients and is continuously striving for excellence in the services and products we offer. 4B is a company you can rely on!

At 4B, we specialize in the manufacture and supply of material handling and electronic components for bucket elevators and conveyors. With subsidiaries in North America, Europe, Asia, Africa and Australia along with a worldwide network of distributors, 4B can provide practical solutions for all your applications no matter the location.



4B USA



4B UK



4B France



4B Germany



4B Asia



4B Africa



4B Australia



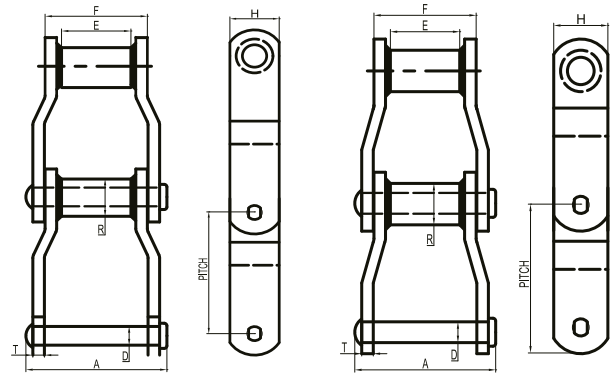
## Contents

Welded Steel Chains for Feed & Washing Tables	1
Combination Chains for Feed & Washing Tables	2
Drop Forged Chains for Feed & Washing Tables	3
Main Cane & Auxilliary Carrier Chains	4
Main Cane Cobra Style with Outboard Rollers	5
Intermediate Carrier Chains	6
Intermediate Carrier Bushed Chains	7
Intermediate Carrier Cast Link Chains	8
Diffuser Chain, Block & Bar Construction	9
Inter Carrier Forged Chains	10
Juice Filter and Bagacilio Elevator Chains	11
Bagasse Conveyor & Elevator Chains	12
Sugar Elevator Chains	13
Boiler Grate Chains	14
Heavy Duty Drive Chains for Mill Pressure Feeder	15
Cane and Intermediate Carrier Slats	16
Sugar Sprockets	17-18
Carbon Steel for Boilers/Juice Heaters/Evaporators/Vac-Pans Stainless Steel Tubes for Juice Heaters/Evaporators/Vac-Pans	19-20



## WELDED STEEL CHAINS FOR FEED & WASHING TABLES

- WR chains have only through-hardened rivets.
- WH chains have all parts through-hardened.
- WHX chains have through-hardened parts and induction hardened rivets as standard.
- Riveted construction is standard. Pin and cottered construction can be furnished on a made-to-order basis.

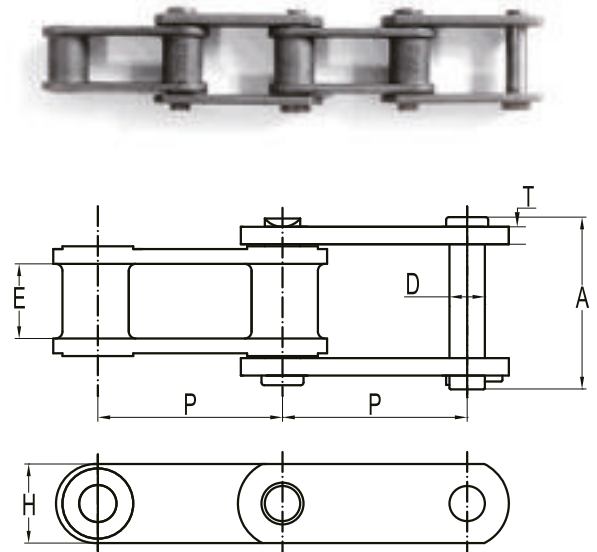
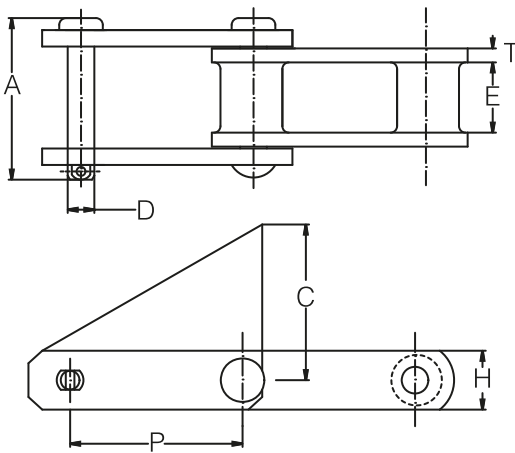
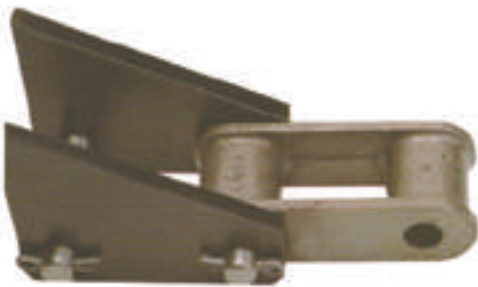


Chain No.	Average Pitch	E(mm)	Sidebar		Pin		Barrel	F( mm)	Min.Ult. Strength (KN)	Avg. Weight chain kg/FT
			T(mm)	H(mm)	D( mm)	A(mm)	R( mm)			
WH78	66.27	25.40	6.40	31.75	12.70	75.00	21.34	51.00	146.80	2.00
WH78XHD	66.95	25.40	9.50	31.75	14.29	82.00	25.40	50.80	163.50	2.80
WH82	78.10	28.58	6.40	31.75	14.29	82.30	25.40	57.15	160.00	2.20
WH82XHD	78.10	28.60	9.70	38.10	19.05	96.50	31.75	60.90	254.00	3.90
WH9103HD	78.11	31.80	9.70	38.10	19.10	92.30	31.80	57.90	287.00	4.00
WH124	101.60	38.10	9.70	38.10	19.05	107.00	31.75	71.40	250.00	3.60
WH124XHD	103.20	38.10	12.70	50.80	25.40	119.50	44.45	76.20	542.00	6.40
WH111	120.90	57.10	9.60	38.10	19.00	123.90	31.70	85.80	254.00	3.64
WH106	152.40	38.10	9.70	38.10	19.05	107.00	31.75	69.85	250.00	3.00
WH720C	152.40	28.58	9.70	38.10	19.05	96.75	31.75	60.32	254.00	2.95
WH110	152.40	47.70	9.60	38.10	19.00	117.30	31.70	76.20	357.00	2.14
WH106XHD	153.67	38.10	12.70	50.80	25.40	120.20	44.45	76.20	542.00	5.60
WH132	153.67	76.20	12.70	50.80	25.40	156.00	44.45	112.30	542.00	6.50
WH132XHD	153.67	76.20	15.88	50.80	25.40	168.86	44.45	118.60	543.00	6.90
WH150	153.67	76.20	12.70	63.50	25.40	156.00	44.50	112.30	620.00	7.40
WH155	153.67	73.20	12.70	63.50	28.40	158.70	44.50	111.20	771.00	7.71
WH157	153.67	76.20	15.90	63.50	29.10	171.00	44.50	117.50	820.00	9.20
WH150XHD	153.67	76.20	15.70	63.50	28.40	171.40	44.50	117.30	920.00	7.98
WH159	155.57	69.85	15.90	76.20	31.75	170.50	50.80	117.50	950.00	11.30

IBR or fully heat treated parts plus induction hardened barrels and rivets.

## COMBINATION CHAINS FOR FEED & WASHING TABLES

- Combination Chains (C Type & BRH Type)

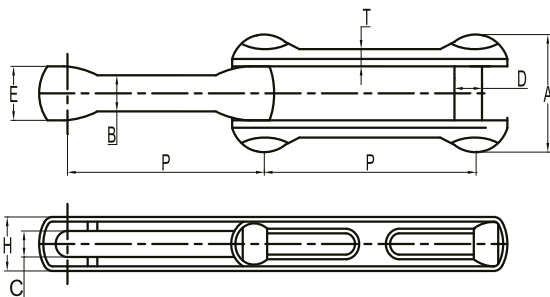


Chain No.	Pitch	E(mm)	Sidebar		Pin		R (mm)	Min.Ult. Strength Q(KN)	Weight KG/FT
			T(mm)	H(mm)	D (mm)	A(mm)			
C55	41.43	17.48	4.75	19.05	9.53	50.03	18.25	57.00	0.91
C77	58.62	17.48	4.75	22.23	11.10	53.59	18.25	67.50	1.04
C188	66.27	23.80	6.35	28.58	12.70	68.32	22.25	84.00	1.63
BRH188	66.27	23.80	5.80	28.58	12.70	—	—	62.30	2.00
C131	78.10	28.50	9.53	38.10	15.88	92.20	31.75	146.30	2.95
C102B	101.60	50.80	9.53	38.10	15.88	113.54	25.40	146.30	3.08
C111	120.90	60.33	9.53	44.45	19.05	130.30	36.50	220.30	4.45
C110	152.40	49.20	9.53	38.10	15.88	113.53	32.51	146.30	2.72
C132	153.67	79.38	12.70	50.80	25.40	165.35	45.21	305.90	6.58

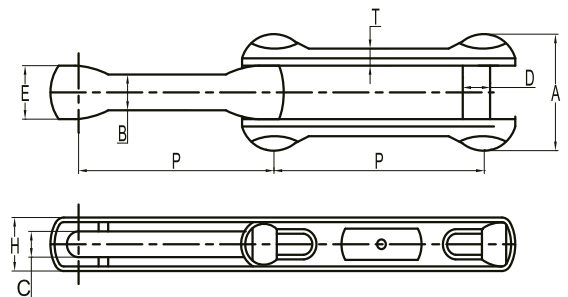
Please contact Braime for different attachments.

## DROP FORGED CHAINS FOR FEED AND WASHING TABLES

- Drop Forged Rivetless chains are typically used as overhead conveyors on automotive assembly lines, paint lines, appliance assembly lines, sugar mills and in the meat packaging industry.
- These chains have high strength, simple construction and do not require any tools assembly. The open design between pin and centre link prevent the conveying material from packing the joints. All parts are heat-treated and “T” pins ensure positive locking action in the sidebars.



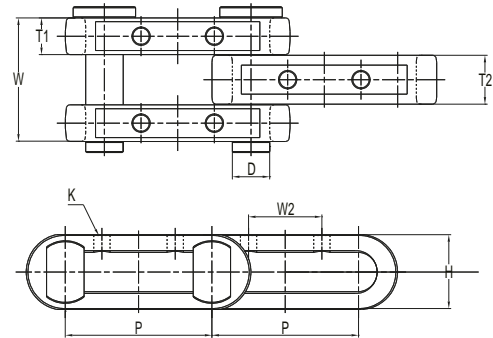
**Regular Type**



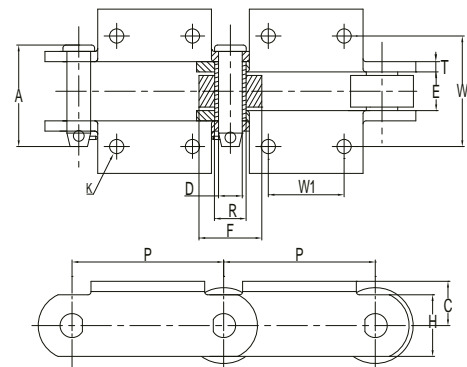
**X Type**

Chain No	Average Pitch	E(mm)	sidebar		Pin		B(mm)	C(mm)	Min.Ult. Strength Q(KN)
			T(mm)	H(mm)	D(mm)	A(mm)			
468HT	102.39	41.28	11.43	47.75	19.05	84.07	29.51	22.23	311.5
678HT	153.19	33.32	18.29	50.80	22.23	76.96	21.34	25.40	378.3
698HT	153.19	39.67	15.06	68.33	28.58	95.25	26.19	31.75	602.9
998HT	229.39	39.67	8.26	64.01	28.58	98.43	25.40	28.58	602.9
X348	76.99	19.05	10.41	26.92	12.70	44.45	13.21	14.27	106.8
X458	102.39	25.91	12.19	36.58	15.88	55.58	16.76	17.48	213.6
X678	153.19	33.32	18.29	50.80	22.23	76.96	21.34	25.40	378.3

## MAIN CANE & AUXILLIARY CARRIER CHAINS



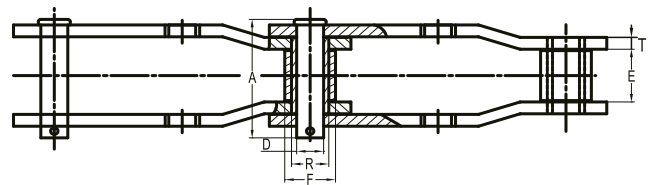
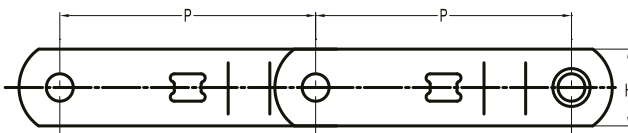
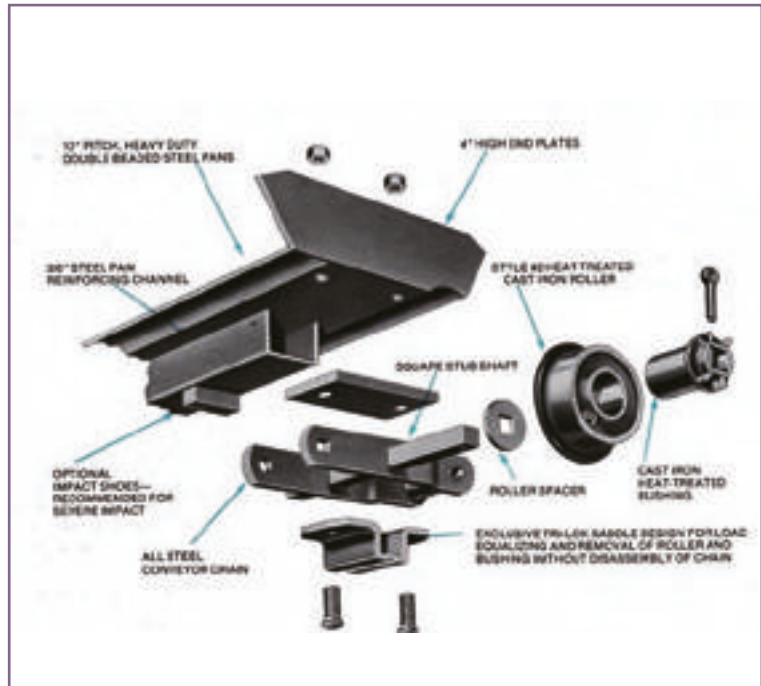
Chain No	Pitch P	Dimension							Weight KG/FT	Ultimate Tensile Q(KN)
		D	H	K	T1	T2	W	W2		
P=6"	152.4	38.9	77.8	17.0	38.1	50.8	128.5	76.2	12.30	1423
P=9"	228.6	38.9	80.0	17.0	40.0	50.0	132.0	95.0	9.58	1423



Chain No	Pitch P	E(mm) min	Sidebar		Pin		Bush	Roller	W(mm)	W1(mm)	K(mm)	C(mm)	Average Ultimate Strength Q(KN)
			T(mm)	H(mm)	D(mm)	A(mm)	R(mm)	F(mm)					
0904	101.6	30.99	7.87	44.45	17.53	81.00	25.40	50.80	88.90	36.58	9.65	31.75	220
09060	152.4	38.10	9.65	50.80	19.05	97.00	28.70	69.85	111.125	76.20	12.70	41.40	270
SS996	152.4	38.10	9.65	50.80	19.05	98.40	28.70	69.85	111.125	76.20	12.70	41.40	315
09061	152.4	38.10	9.65	57.15	19.05	97.00	28.70	69.85	111.125	76.20	12.70	41.40	380
1796	152.4	38.10	9.65	57.15	22.23	99.00	31.75	69.85	111.125	76.20	14.27	41.40	450
1797	152.4	38.10	9.65	57.15	22.23	99.00	31.75	76.20	111.125	76.20	14.27	41.40	450
2178	152.4	39.67	9.525	50.80	22.23	95.23	28.70	69.85	143.10	76.20	14.27	41.40	270
2198	152.4	38.10	12.70	60.45	22.10	112.00	31.75	76.20	111.125	76.20	12.70	41.40	450
09063	152.4	38.10	10.41	60.45	23.88	102.10	31.75	76.20	111.125	76.20	12.70	44.45	630
09065	152.4	38.10	12.70	60.45	26.92	107.89	38.10	76.20	111.125	76.20	12.70	42.93	720
113C	152.4	38.40	12.70	65.00	22.20	111.20	31.75	81.00	111.125	76.20	14.30	45.50	420
SS800R	203.2	45.97	12.70	71.37	25.58	124.00	38.10	88.90	131.83	114.30	16.00	55.60	750
B5513	228.6	61.09	16.00	69.85	31.75	142.62	44.45	107.95	203.20	76.20	19.05	69.85	810
C2630	304.8	69.85	16.00	88.90	35.05	133.60	44.45	101.60	203.20	127.00	17.53	69.85	1350

The sidebar can be used Curve Sidebar.

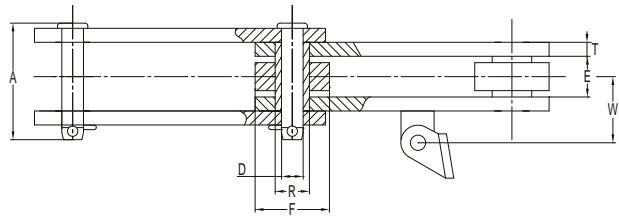
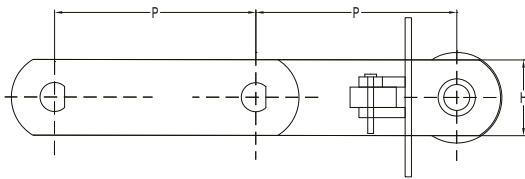
## MAIN CANE COBRA STYLE WITH OUTBOARD ROLLERS



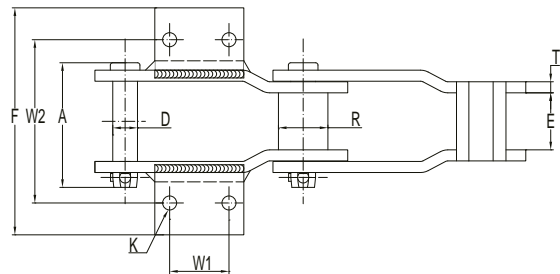
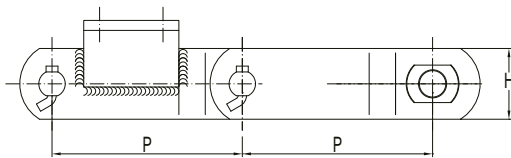
Chain No	Pitch P	E(mm) min	Sidebar		Pin		Bush	Roller	Average Ultimate Strength Q(KN)
			T(mm)	H(mm)	D(mm)	A(mm)			
2397 M14	152.4	55.5	10	63.5	22.2	116.00	31.75	44.5	380
2358 M14	228.6	49.23	12.70	63.50	22.23	154.20	32.20	44.45	472
1707 M14	304.8	76.20	12.70	63.50	25.40	154.76	38.10	57.15	617
2614 M14	304.8	69.85	15.88	88.90	31.75	161.90	44.30	63.50	900
2630 M14	304.8	69.85	15.88	88.90	34.90	162.70	47.75	63.50	980
12220 M14	304.8	70.64	15.88	101.60	38.10	161.44	53.98	79.38	1125
1223 M14	304.8	70.61	15.88	101.60	38.10	195.58	53.98	88.90	1350
2648 M14	304.8	92.20	19.05	101.60	41.40	196.85	82.55	101.60	1575



## INTERMEDIATE CARRIER CHAINS

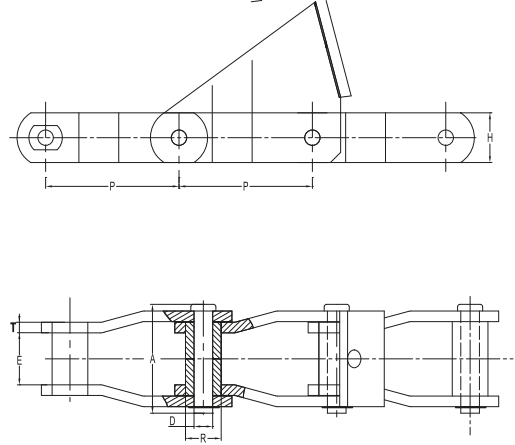


Chain No	Pitch P	E(mm) min	Sidebar		Pin		Bush	Roller	W(mm)	Average Ultimate Strength Q(KN)
			T(mm)	H(mm)	D(mm)	A(mm)	R(mm)	F(mm)		
1131	152.4	39.63	9.53	50.80	19.05	99.00	28.60	76.20	66.00	209
09060	152.4	38.10	9.65	50.80	19.05	97.00	28.70	69.85	88.90	270
09061	152.4	38.10	9.65	57.15	19.05	97.00	28.70	69.85	88.90	380
09063	152.4	38.10	10.30	61.90	23.83	102.10	31.75	76.20	100.00	630
1796	152.4	38.10	9.65	57.15	22.23	99.00	31.75	69.85	88.90	450
2198	152.4	38.86	12.70	57.15	22.35	112.00	31.75	76.20	99.31	450



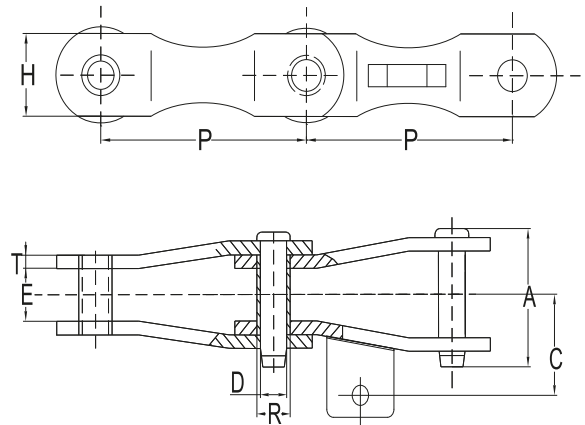
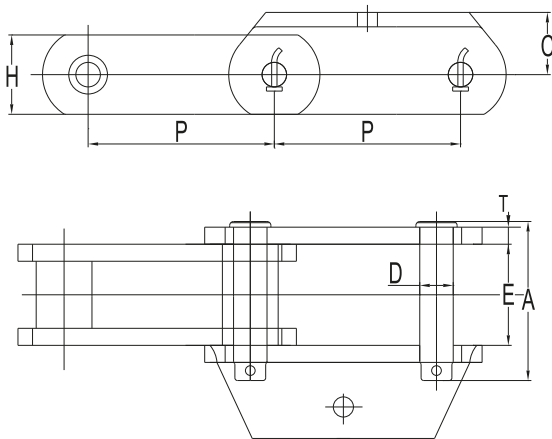
Chain No	Pitch P	E(mm)	Sidebar		Pin		Bushing	W1(mm)	W2(mm)	F (mm)	K(mm)	Average Ultimate Strength Q(KN)
			T(mm)	H(mm)	D(mm)	A(mm)	R(mm)					
C84	228.60	73.00	14.28	82.06	31.75	160.00	38.00	76.20	209.55	291.31	18.00	1112.00
C69	304.80	69.85	15.88	101.60	35.24	163.00	42.00	106.90	209.60	295.00	20.00	1350.00

## INTERMEDIATE CARRIER BUSHED CHAINS



### FG ATTACHMENT

Chain No	Pitch P	E(mm) min	Sidebar		Pin		Bush	C(mm)	Average Ultimate Strength Q(KN)
			T(mm)	H(mm)	D(mm)	A(mm)	R(mm)		
5002 FG35 E4P	153.67	50.80	13.00	64.00	25.27	127.00	50.80	141.00	400
5025 FG36 E4P	152.4	50.80	12.70	76.20	25.27	127.00	50.80	146.30	520
SS9957SJ	152.4	38.90	12.70	82.60	25.40	56.13	44.50	120.14	445

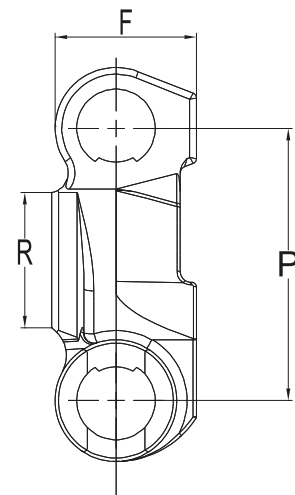
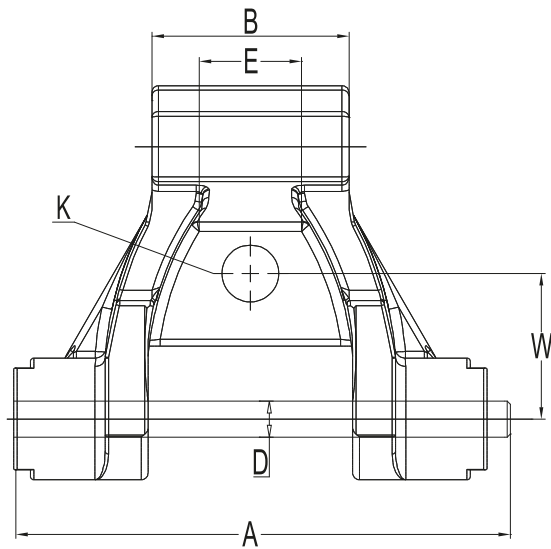


### SS9957SJ

Chain No	Pitch P	E(mm) min	Sidebar		Pin		R(mm)	C(mm)	Weight KG/FT	Min. Ult Strength Q(KN)
			T(mm)	H(mm)	D(mm)	A(mm)				
32949	203.20	46.0	12.7	80.0	25.4	122.0	38.1	95.0	10.66	588

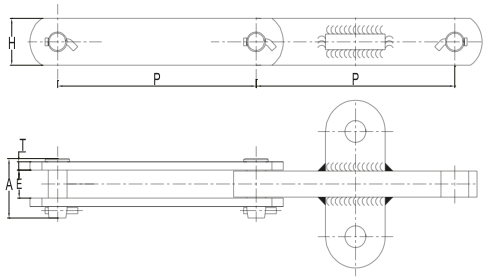


### INTERMEDIATE CARRIER CAST LINK CHAINS

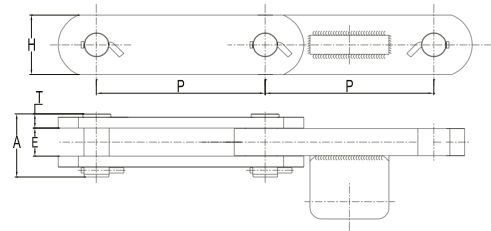


Chain No	Pitch P	Dimension								Weight KG/FT	Min. Ult Strength Q(KN)
		A	B	D	E	F	K	R	W		
907-E51	80.52	146.5	58.3	16.0	26.0	42.8	16.8	40.0	43.0	5.75	125

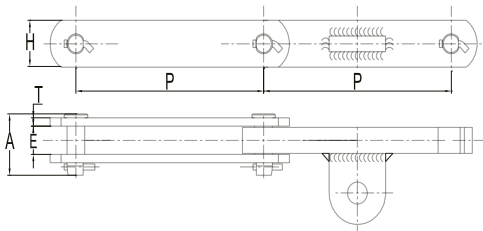
## DIFFUSER CHAIN, BLOCK & BAR CONSTRUCTION



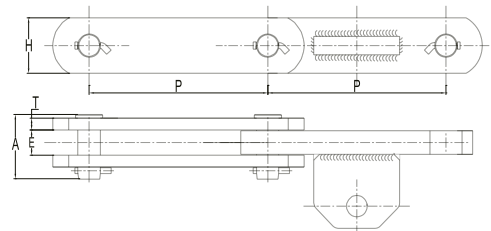
I



II



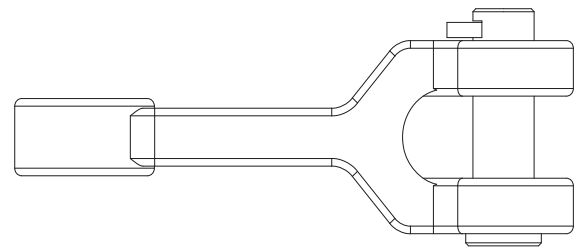
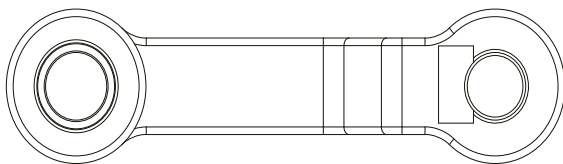
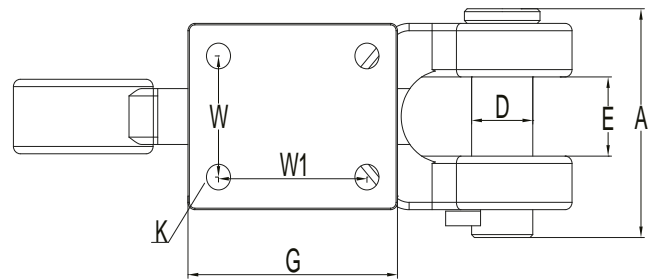
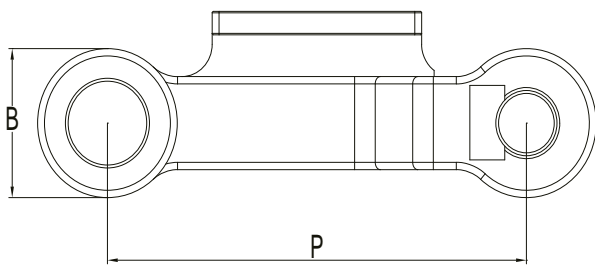
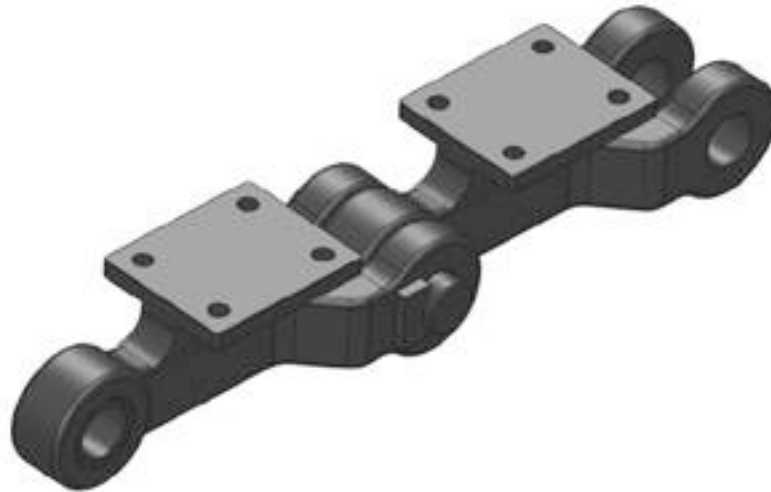
III



IV

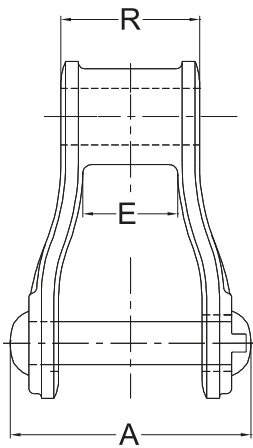
Chain No	Style	Pitch P	E(mm) min	Sidebar		Pin		Bush	Weight KG/FT	Min. Ult Strength Q(KN)
				T(mm)	H(mm)	D(mm)	A(mm)	R(mm)		
Block chain P=200	I	200	27.0	8.0	45.0	19.3	57.0	25.0	2.99	175
Block chain P=200	II	200	27.0	8.0	45.0	19.3	57.0	25.0	2.83	210
Block chain P=250	III	250	34.0	16.0	75.0	31.8	87.4	38.0	8.11	600
Block chain P=300	IV	300	52.0	20.0	110.0	44.3	117.0	50.0	16.69	1350

## INTER CARRIER FORGED CHAINS

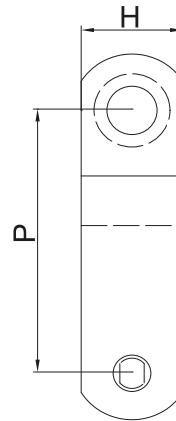
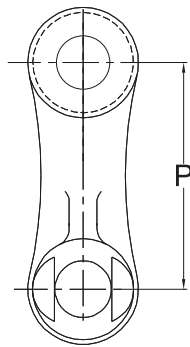


Chain No	Pitch P	Dimension								Weight KG/FT	Min. Ult Strength Q(KN)
		A	B	D	E	G	K	W	W1		
P=9"	228.6	147.0	90.0	40.2	41.0	120.0	17.0	90.0	75.0	12.46	700
P=12"	304.8	156.0	101.6	44.5	54.0	152.4	17.5	82.6	108.0	30.50	880

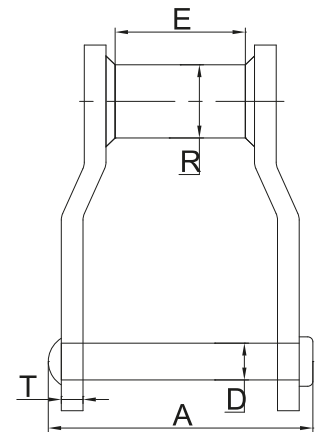
## JUICE FILTER AND BAGACILIO ELEVATOR CHAINS



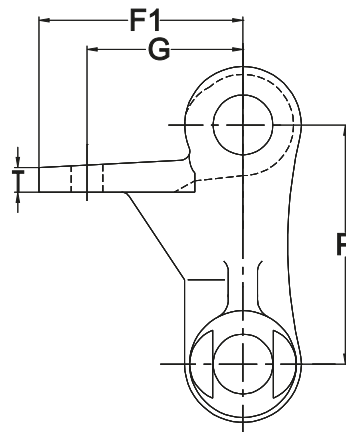
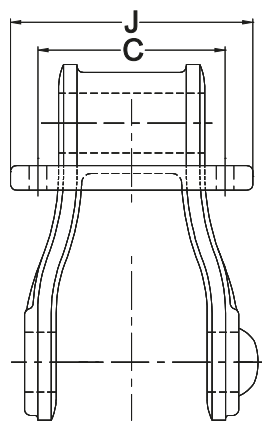
**4103**



**WH9103HD**



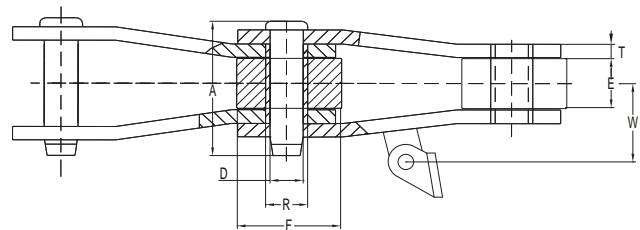
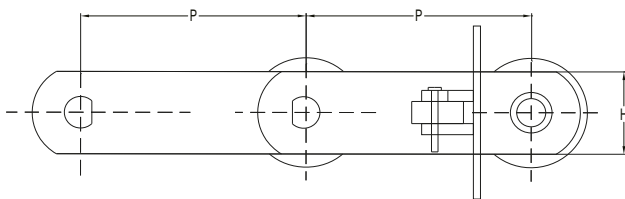
Chain No	Pitch P	E(mm) min	Pin		Bush R(mm)	Weight KG/FT	Min. Ult Strength Q(KN)
			D(mm)	A(mm)			
4103	78.11	28.4	19.1	90.5	47.8	2.5	127.4
WH9103HD	78.11	31.8	19.1	92.3	57.9	3.6	267.3



**4103 WH9103HD  
F29/F30**

Chain No	Dimensions					weight KG/FT
	C	J	F1	G	T	
4103-F29	56.4	79.2	66.5	50.8	10.4	4.36
4103-F30	56.4	79.2	66.5	50.8	10.4	4.36
WH9103HD-F29	56.4	79.2	66.5	50.8	9.7	5.15
WH9103HD-F30	56.4	79.2	66.5	50.8	9.7	5.15

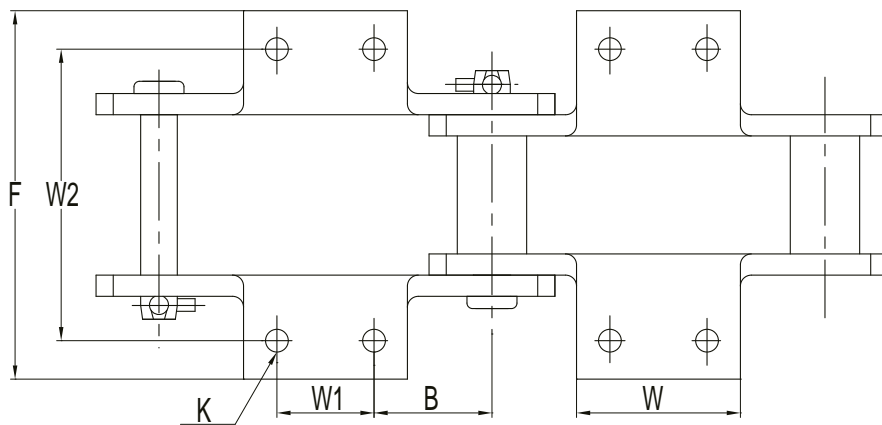
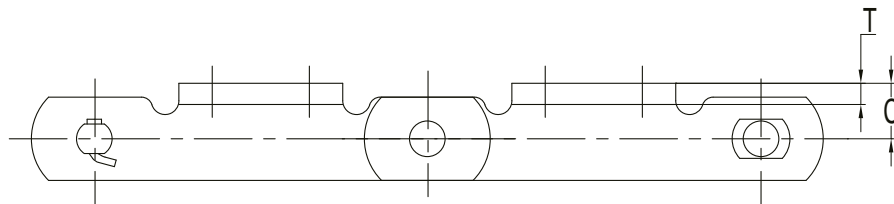
## BAGASSE CONVEYOR & ELEVATOR CHAINS



Chain No	Pitch P	E(mm) min	Sidebar		Pin		Bush	Roller	W(mm)	Average Ultimate Strength Q(KN)
			T(mm)	H(mm)	D(mm)	A(mm)	R(mm)	F(mm)		
0401	101.6	33.27	9.65	41.40	16.00	89.66	23.88	50.80	57.15	200
3135	152.4	31.75	9.65	50.80	19.05	90.68	28.70	88.90	60.45	250
2184	152.4	34.90	9.50	50.80	22.23	95.20	31.75	76.20	91.90	356
3184	152.4	35.05	9.65	60.45	22.35	109.47	31.75	76.20	65.02	380
09060	152.4	38.10	9.50	50.80	19.05	97.00	28.70	69.85	88.90	270
09061	152.4	38.10	9.65	57.15	19.05	97.00	28.70	69.85	88.90	380
09063	152.4	38.10	10.30	61.90	23.83	102.10	31.75	69.88	100.08	630
1796	152.4	38.10	9.65	57.15	22.23	99.00	31.75	69.85	88.90	450
2198	152.4	38.10	12.70	57.15	22.35	112.00	31.75	69.85	98.55	450
9184	152.4	38.10	12.70	63.50	23.88	112.80	31.75	76.20	98.43	787
9185	152.4	38.10	12.70	63.50	23.88	112.80	31.75	88.90	98.43	787
F9184	152.4	39.60	12.70	63.50	23.88	112.80	31.75	76.20	98.43	787
8184	203.2	45.97	12.70	69.85	25.40	96.77	38.10	88.90	81.79	751.5
B5509	228.6	37.85	9.65	57.15	22.23	76.45	31.75	76.20	79.25	450

Sidebar and attachment according to customers' requirements

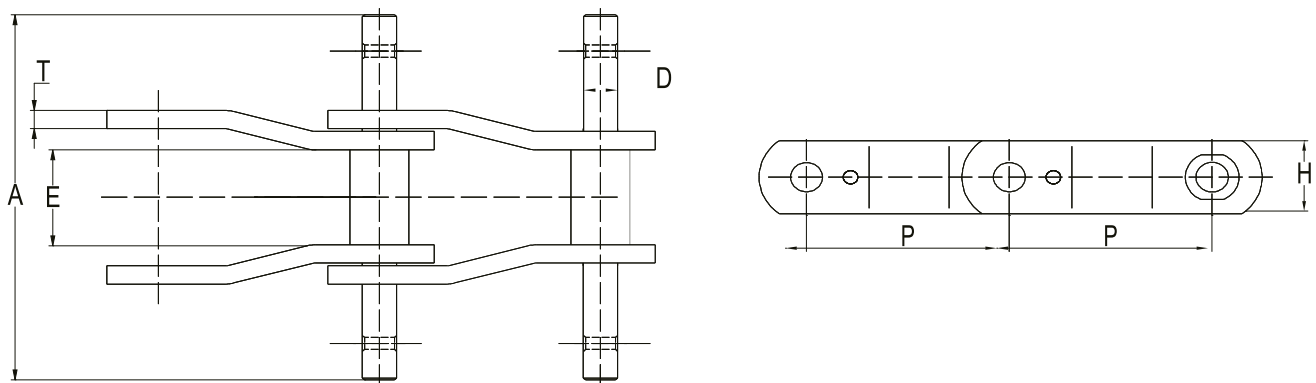
## SUGAR ELEVATOR CHAINS



Chain No	K2								Weight Kgs/mt
	B	C	F	K	T	W	W1	W2	
SS102B	28.4	25.4	162.8	10.4	9.7	66.5	44.5	134.9	13.4
SS111	31.2	38.1	190.5	14.2	9.7	91.9	58.7	158.8	22.7
SS110	53.8	25.4	162.1	10.4	9.7	73.2	44.5	134.9	12.8
SS856	47.8	47.8	228.6	14.2	12.7	107.9	57.2	160.3	34.3

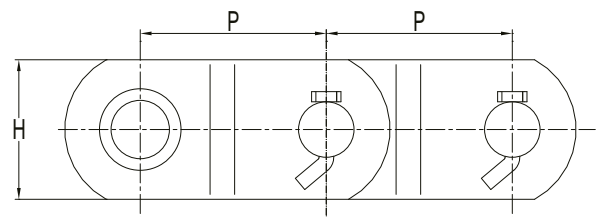
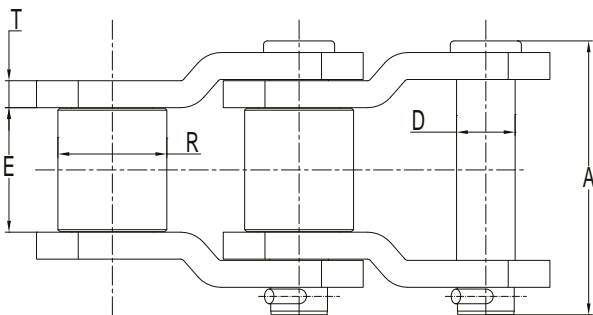


## BOILER GRATE CHAINS



Chain No	Pitch P	E(mm) min	Sidebar		Pin		Weight KG/FT	Min. Ult Strength Q(KN)
			T(mm)	H(mm)	D(mm)	A(mm)		
5309	101.35	52.0	10.0	40.0	15.7	200.0	4.02	140

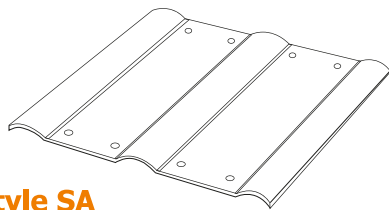
## HEAVY DUTY DRIVE CHAINS FOR MILL PRESSURE FEEDER



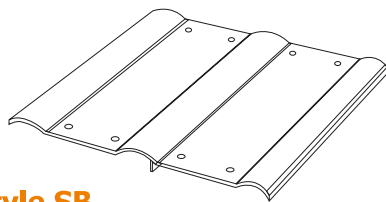
Chain No.	Pitch (mm)	E(mm)	sidebar		Pin		Bush	Average Ultimate Strength Q(KN)
	P	min	T(mm)	H(mm)	D(mm)	A(mm)	R(mm)	
1031	78.11	38.10	7.90	38.10	15.90	85.90	31.80	216.00
1032	78.11	38.10	7.90	41.10	15.90	87.10	31.80	270.00
3075	78.11	38.10	9.70	44.60	16.50	93.70	31.80	337.50
3514	88.90	38.10	12.70	57.20	22.20	112.80	44.50	630.00
1242	103.20	49.20	12.70	57.20	22.20	124.00	44.50	630.00
1245	103.45	49.30	14.20	60.50	23.80	130.00	45.20	765.00
5031	127.00	69.90	15.70	88.90	31.80	158.80	63.50	1395.00
5035	127.00	65.00	19.10	88.90	34.90	168.10	63.50	1575.00
6065	152.40	76.20	19.10	120.70	44.50	185.90	76.20	2700.00
1353	103.89	57.20	15.70	76.20	33.30	146.10	66.50	945.00
6060	152.40	82.60	22.40	127.00	44.50	204.70	88.90	2700.00
6560	165.10	82.60	22.40	127.00	44.50	204.70	88.90	2700.00



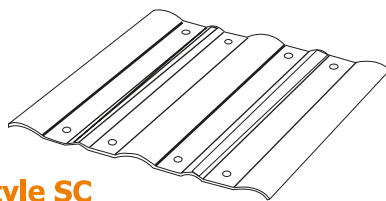
## CANE AND INTERMEDIATE CARRIER SLATS



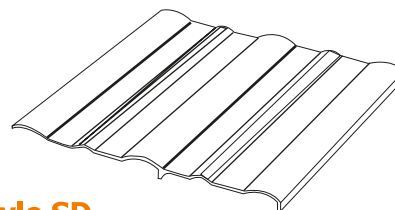
Style SA



Style SB



Style SC

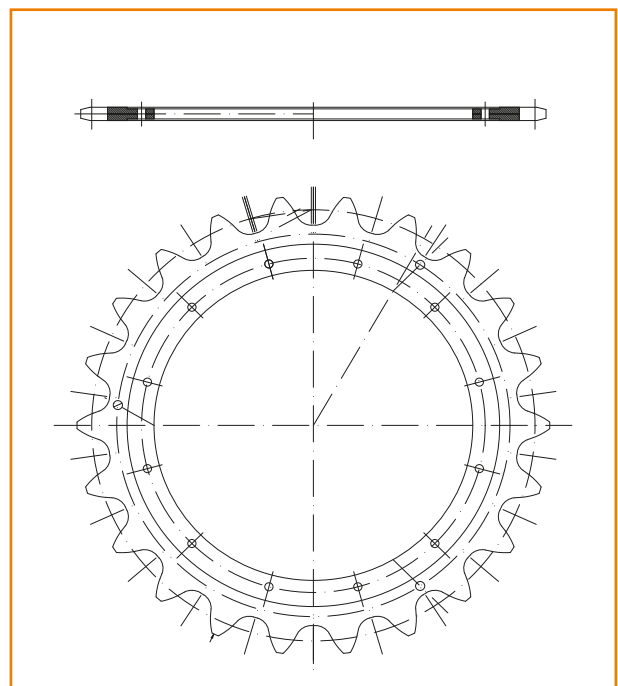
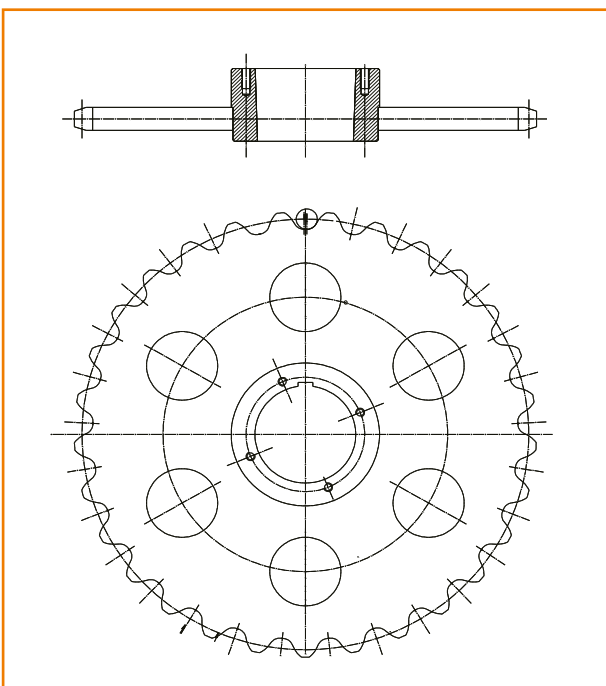
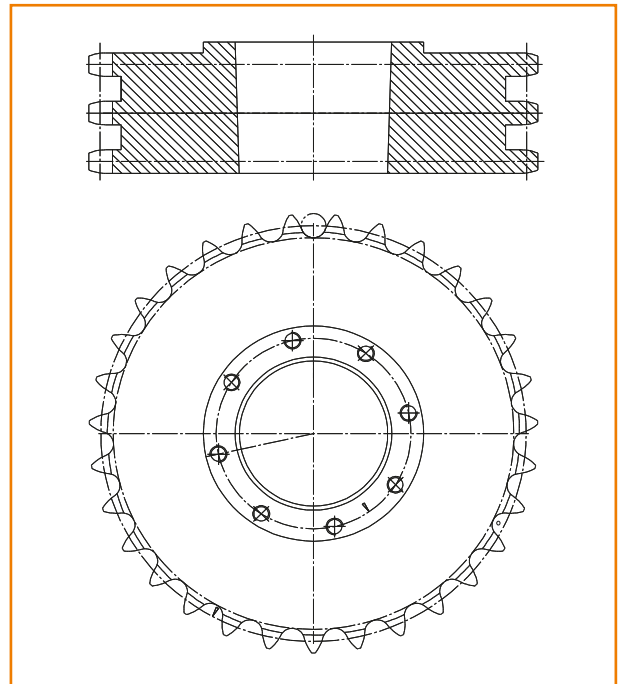
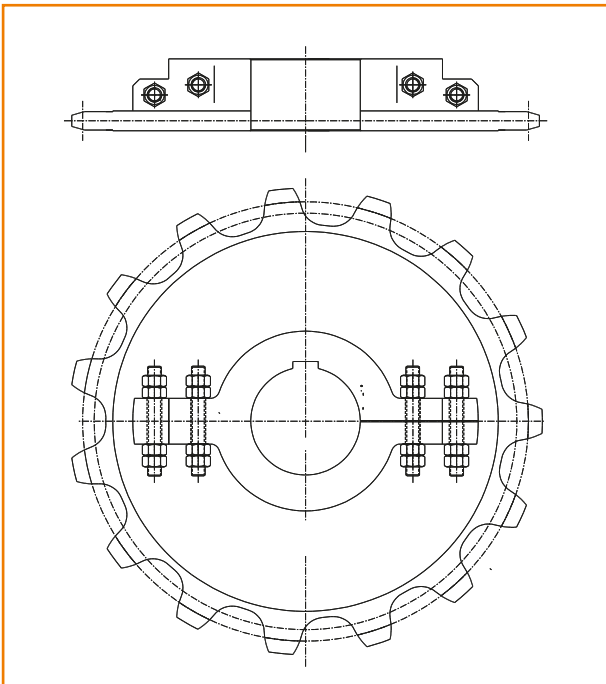


Style SD

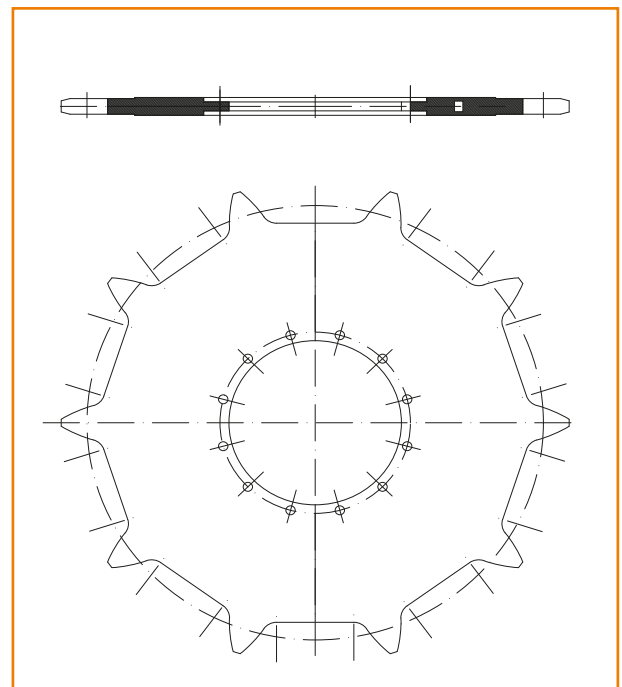
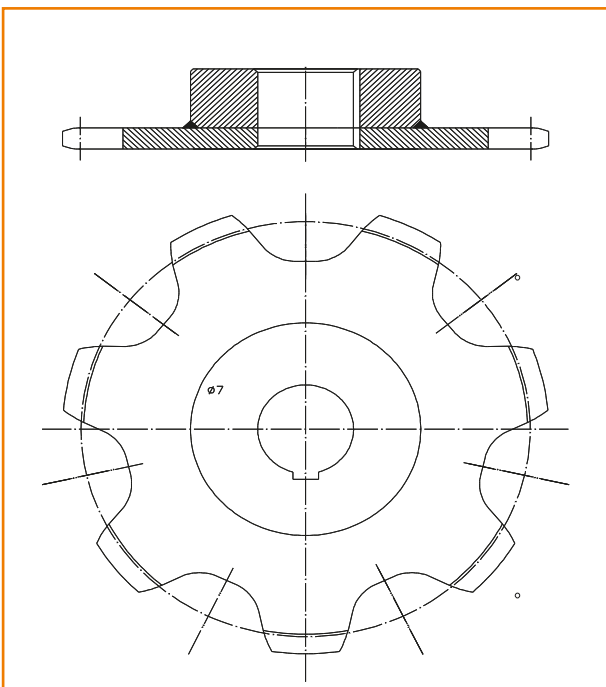
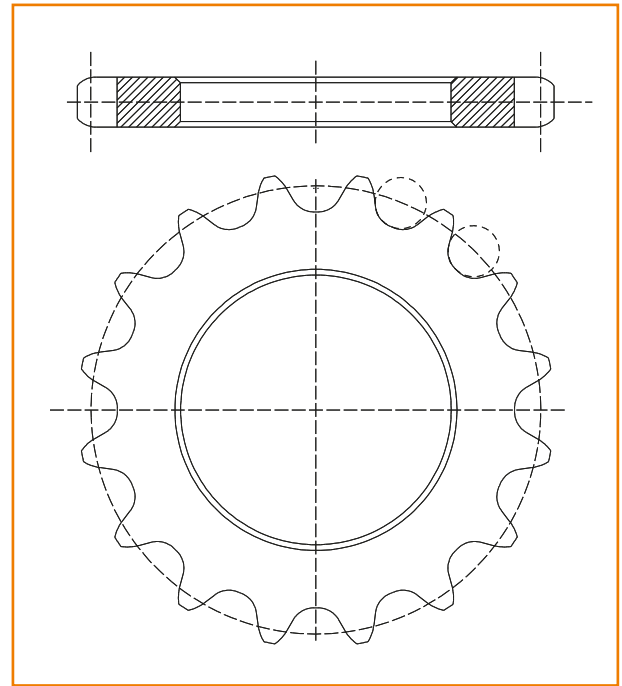
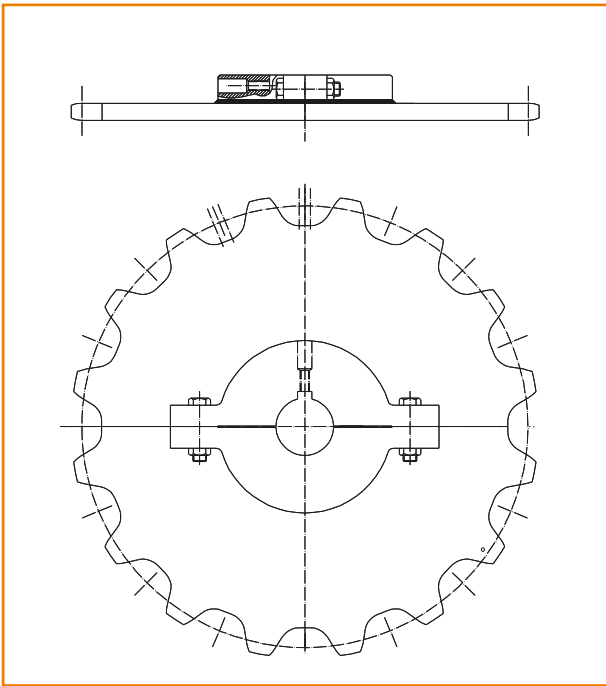


Style SA			Style SB			Style SC			Style SD		
Width	Weight		Width	Weight		Width	Weight		Width	Weight	
	3/16"	1/4"		3/16"	1/4"		3/16"	1/4"		3/16"	1/4"
30	11.7	15.5	30	13.1	17.5	30	12.3	16.5	30	13.9	18.6
36	14.0	18.6	36	15.8	21.1	36	14.8	19.8	36	16.8	22.3
42	16.3	21.7	42	18.4	24.5	42	17.3	23.1	42	19.6	26.1
48	18.7	24.8	48	21.1	28.1	48	19.8	26.4	48	22.3	29.8
54	21.0	27.9	54	23.7	31.5	54	22.2	29.6	54	25.1	33.5
60	23.4	31.0	60	26.3	35.2	60	24.1	32.9	60	27.9	37.2
66	25.7	34.1	66	28.9	38.5	66	27.2	36.2	66	30.7	40.9
72	28.0	37.3	72	31.6	42.1	72	29.6	39.4	72	33.6	44.6
78	30.4	40.4	78	34.2	45.6	78	32.1	42.8	78	36.3	48.4
84	32.7	43.5	84	36.8	49.1	84	34.6	46.2	84	39.0	52.1
90	35.0	46.6	90	39.4	52.6	90	37.0	49.4	90	41.9	55.7
96	37.4	49.7	96	42.1	56.1	96	39.5	52.6	96	44.7	59.5
102	39.7	52.8	102	44.7	59.6	102	41.9	56.0	102	47.4	63.3
108	42.0	55.9	108	47.4	63.2	108	44.4	59.3	108	50.3	67.0

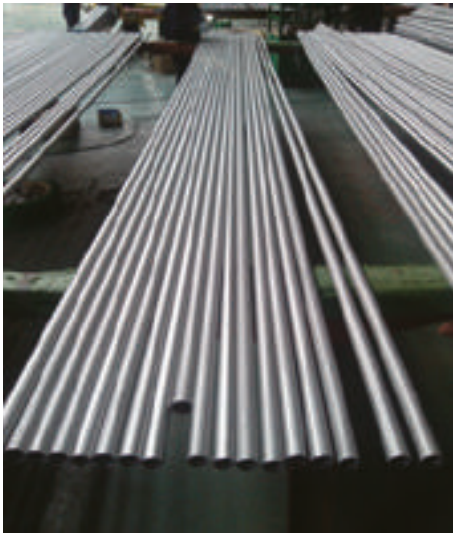
## SUGAR SPROCKETS



## SUGAR SPROCKETS



**CARBON STEEL FOR BOILERS/JUICE HEATERS/EVAPORATORS/VAC-PANS**  
**STAINLESS STEEL TUBES FOR JUICE HEATERS/EVAPORATORS/VAC-PANS**



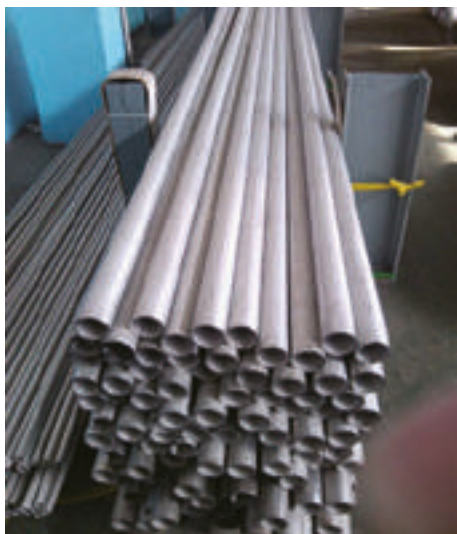
Tolerance for Stainless Steel Pipe												
ASTM A312 A778 JIS G3459												
Specification	Outside Diameter								Wall thickness		Straightness	Length
ASTM	O.D. (mm)	≤ 48.26	48.26	114.30	219.08	457.20	660.40	863.60	+22.5% -12.5%		6.4mm/6M	+50mm -0mm
			~	~	~	~	~	~				
	Tolerance (mm)	+0.4 -0.8	+0.8 -0.8	+1.6 -0.8	+2.4 -0.8	+3.2 -0.8	+4.0 -0.8	+4.8 -0.8				
JIS	O.D. (mm)	<30mm			≥30mm				W.T.	m<2m	≥2mm	≥defined length
	Tolerance (mm)	±0.30mm			±1%				Tolerance	±0.2mm	±10%	

Tolerance for Boiler and Heat-Exchanger Stainless Steel Tube						
ASTM A249 A269 JIS G3463						
Specification	Item	Outside Diameter(mm)	Wall Thickness			Length
ASTM		12.7~38.1 ±0.13	±10%			+50mm -0mm
		38.1~88.9 ±0.25				
		88.9~139.8 ±0.38				
JIS		≤60 ±0.25	O.D.	W.T.	Tolerance	≥defined length
		60~80 ±0.30	<40mm	<2mm	+0.4mm -0mm	
		80~100 ±0.40	<40mm	≥2mm	+20% -0mm	
		100~120 ±0.40	≥40mm	-	+22% -0mm	
		120~160 ±0.40				
		-0.60				
		-0.80				



www.go4b.com

**CARBON STEEL FOR BOILERS/JUICE HEATERS/EVAPORATORS/VAC-PANS**  
**STAINLESS STEEL TUBES FOR JUICE HEATERS/EVAPORATORS/VAC-PANS**



RANGE: 6.0MM OD to 168.3MM OD

GRADES: AISI-304, 304L, 316, 316L, 439.

STANDARDS: ASTM A-213, A-249, A-269, A-270, A-312, A-376, A-554, A-668 and A-358, A-778

ALSO DIN, IS, JS, and BRITISH STANDARDS

INFORMATION NEEDED TO QUOTE:

ITEMS		
OD (Tolerance)		
Wall (Tolerance)		
Length (Tolerance)		
Qty		
Material		
Standard		
Packing		
Test		
Certificate		
	YES	NO
HT (Annealing)		
Insider-Levelling		
Surface condition (Polishing)		
Surface condition (Pickling)		

## **4B BRAIME ELEVATOR COMPONENTS**

Headquarters  
Hunslet Road  
Leeds LS10 1JZ  
UK  
Tel: +44 (0) 113 246 1800  
Fax: +44 (0) 113 243 5021  
Email: 4b-uk@go4b.com

## **4B COMPONENTS**

625 Erie Avenue  
Morton, IL 61550  
USA  
Tel: 309-698-5611  
Fax: 309-698-5615  
Email: 4b-usa@go4b.com

## **4B SETEM**

9 Route de Corbie  
80800 Lamotte Warfusée  
FRANCE  
Tel: +33 (0) 3 22 42 32 26  
Fax: +33 (0) 3 22 42 37 33  
Email: 4b-france@go4b.com

## **4B DEUTSCHLAND**

9 Route de Corbie  
F-80800 Lamotte Warfusée  
FRANCE  
Tel: +49 (0) 700 2242 4091  
Fax: +49 (0) 700 2242 3733  
Email: 4b-deutschland@go4b.com

## **4B ASIA PACIFIC**

Build No.899/1 Moo 20, Soi Chongsiri,  
Bangplee-Tam Ru Road, Tanbon  
Bangpleeyai, Amphur Bangplee,  
Samutprakarn, 10540  
THAILAND  
Tel: +66 (0) 2173-4339  
Fax: +66 (0) 2173-4338  
Email: 4b-asiapacific@go4b.com

## **4B AFRICA**

14 Newport Business Park Mica Drive,  
Kya Sand, 2163 Johannesburg  
SOUTH AFRICA  
Tel: +27 (0) 11 708 6114  
Fax: +27 (0) 11 708 1654  
Email: 4b-africa@go4b.com

## **4B AUSTRALIA**

Unit 1-18 Overlord Place  
Acacia Ridge  
Queensland 4110  
AUSTRALIA  
Tel: +61 (0) 7 3711 2565  
Fax: +61 (0) 7 3711 2574  
Email: 4b-australia@go4b.com

### **4B catalogues also available:**

- Elevator Buckets
- Elevator Belting
- Bolts & Fasteners
- Electronics
- Forged Chains

Please contact us on: **+44 (0) 113 246 1800**  
**4b-uk@go4b.com**

**BETTER BY DESIGN**

Our policy is one of continuous improvement; therefore we reserve the right to amend specification without prior notice. All information contained herein is provided in good faith and no warranty is given or implied. E&OE.



[www.go4b.com](http://www.go4b.com)

