

For Rotation Monitoring

The SR 4000W Series Speed Relay Modules Are Intended For Use With Rotech Motion Sensors, Shaft Encoders and Wheel Sensors fitted with the 'W' type output, to detect if the speed of a rotating shaft or belt rises or falls below a preset level.



EU DIRECTIVES

FEATURES:

Single 110/120 VAC common supply and encoder voltage

Easy setting of required trip/alarm speed directly in rpm

Extensive range of optional features including automatic start delay (refer to additional information on automatic start delay operation)

Multiple ranges, fixed start delay, etc.

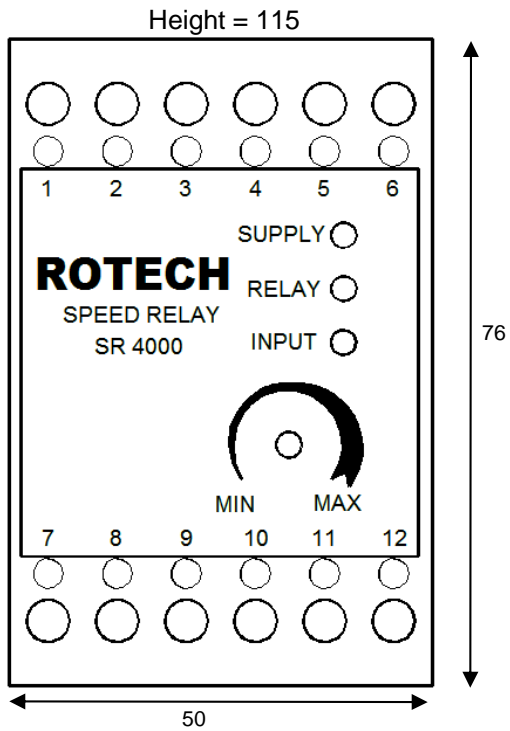
Three speed ranges are available on each module. Standard ranges are 1-10 rpm, 1-100rpm and 1-1000 rpm. The required range being selected by link on the terminal rail. Other modules are available with ranges covering the speeds 0.01 rpm to 20,000 rpm.

In normal operation the output relay of the module is energised if the speed of the shaft is above the set level and de-energised if speed is below the set level.

Front mounted led's indicate power on, relay energised, input signal status.

Dimensions and Installation Information

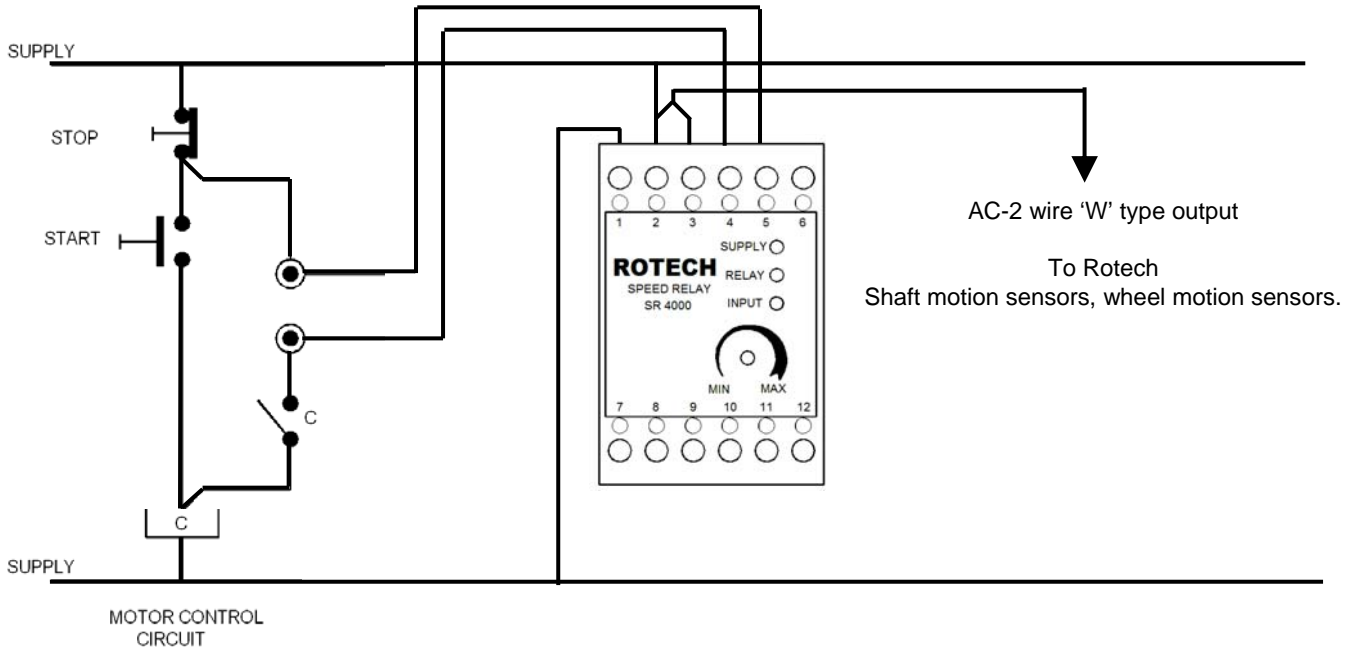
Shown in millimetres



Connections – AC 2 wire 'W' type sensors only

1	Neutral	AC mains power	Brown	Rotech motion sensor
2	110/120V 50/60Hz	supply		
3	Input – AC 'W' type 2 wire sensor		Blue	
4	N.O.	Output relay S.P.C.O rated 5A @ 250VAC / 30VDC		
5	Common			
6	N.C.			
7	0VDC			
8	Input			
9	+12 VDC			
10	Speed	No links = 0 to 10RPM		
11	Range	Link 10 to 11 = 0 to 100RPM		
12	Links	Link 10 to 12 = 0 to 1000RPM		

Typical installation shown for 110/120 V AC supply



Mounting: DIN 35x7.5mm Rail
 Environment Ingress: IP50
 Temperature: -10°C to +70°C



4B Braime Elevator Components Limited

Telephone: +44 (0)113 243 5021
 Fax: + 44 (0)113 243 5021
 Email: 4b-uk@go4b.com

Hunslet Road, Leeds, LS10 1JZ

www.go4b.com