

For Rotation Monitoring

The SR 24000 series speed relay modules are intended for use with all Rotech motion sensors, shaft encoders, wheel sensors, vibration sensors and proximity probes to detect if the speed of a rotating shaft rises or falls below a preset level.



FEATURES:

Input AC supply Voltage: Range 85 – 264 VAC (optional - 24 Volt DC)

Easy setting of required trip/alarm speed directly in RPM via front dial adjustment

Extensive range of optional features including automatic start delay (refer to additional information on automatic start delay operation)

Multiple Ranges, Fixed Start Delay, Etc.

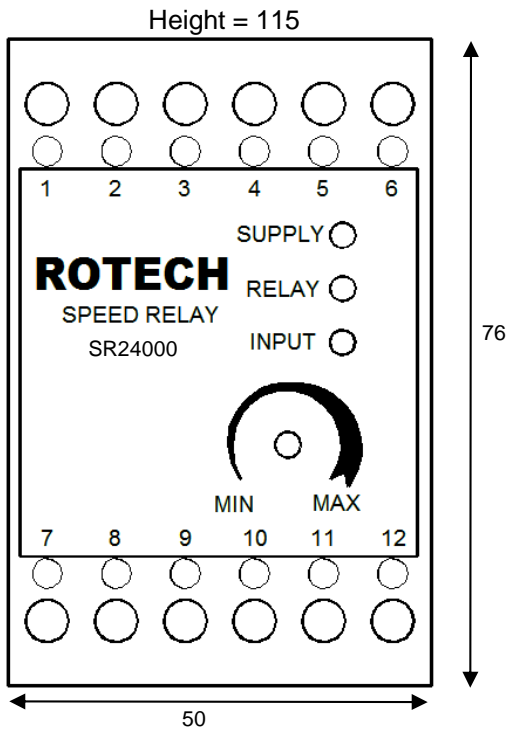
Three speed ranges are available on each module. Standard ranges are 1-10 RPM, 1-100 RPM and 1-1000 RPM. The required range being selected by link on the terminal rail. Other modules are available with ranges covering the speeds 0.01 rpm to 20,000 RPM.

In normal operation the output relay of the module is energised if the speed of the shaft is above the set level and de-energised if speed is below the set level.

Front mounted LED's indicate power on, relay energised, input signal status.

Dimensions and Installation Information

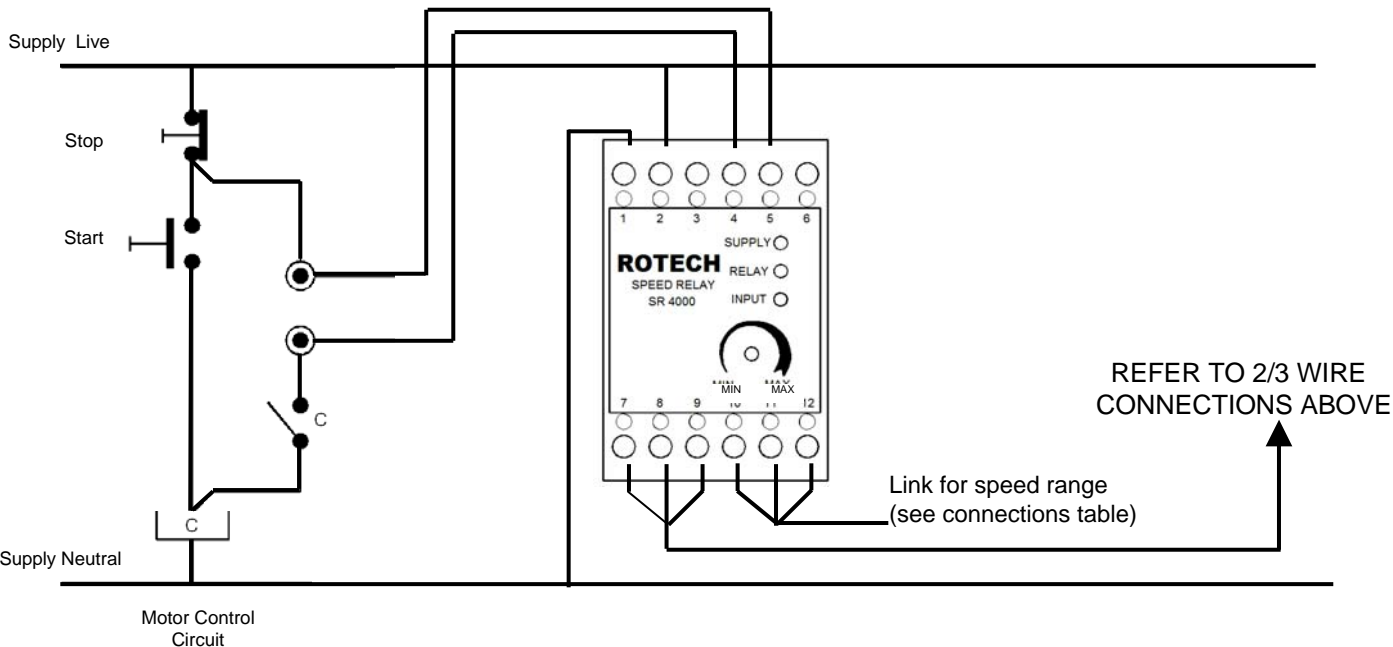
Shown in millimetres



Connections – DC 2/3 wire sensors

1	Neutral	AC mains power supply 85-264 VAC (47-63Hz)	1	24VDC-Positive
2	Live		2	24VDC-Negative
3	Not Connected		DC Power supply	
4	N.O.	Output relay rated 5A @ 250VAC / 30VDC		
5	Common			
6	N.C.			
7	0VDC	Blue } 2 Wire Sensors Brown } Blue } 3 Wire Sensors Black }		
8	Input			
9	+24 VDC @150mA			
10	Speed	No links = 0 to 10RPM		
11	Range	Link 10 to 11 = 0 to 100RPM		
12	Links	Link 10 to 12 = 0 to 1000RPM		

Typical installation shown for AC supply



Mounting: DIN 35x7.5mm Rail
 Environment Ingress: IP50
 Temperature: -10°C to +70°C



4B Braime Elevator Components Limited

Telephone: +44 (0)113 243 5021
 Fax: + 44 (0)113 243 5021
 Email: 4b-uk@go4b.com

Hunslet Road, Leeds, LS10 1JZ

www.go4b.com