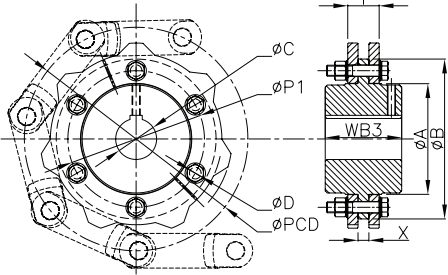
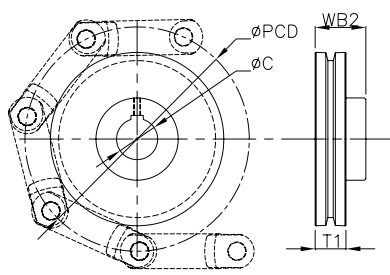


TRAILERS

**SEGMENTAL STUB TRAILER
(SHOWN WITH HUB)**



**ASYMMETRIC SMOOTH
TRAILER****



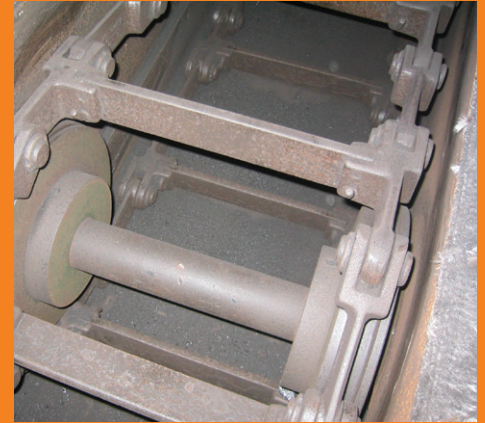
Chain Link	ØC max Smooth Trailer (mm)	Pitch Circle Dia. ØPCD (mm)	Hub Width* (mm)		Rim Width T1 (mm)
			Smooth WB2	Segmental WB3	
4B102NA	65	204.0	57	83	35
	65	235.1	57	83	35
	65	266.5	57	83	35
	65	298.2	57	83	35
	65	330.1	57	83	35
4B142NA	85	284.0	74	112	45
	85	327.3	74	112	45
	85	371.1	77	127	45
	115	415.2	77	127	45
	115	459.5	77	127	45
	115	504.0	105	150	45
	115	548.6	105	150	45
	115	593.4	120	150	45
	115	638.1	120	150	45
4B142HA	115	327.3	110	127	75
	115	371.1	110	150	75
	115	415.2	110	150	75
	115	459.5	120	150	75
	140	504.0	120	150	75
	140	548.6	120	150	75
	140	593.4	120	150	75
	140	638.1	140	150	75

* Smooth and segmental trailers have different hub widths as noted (WB2 & WB3).

** Symmetric smooth trailers on demand.

Bore and keyway to customer specification.

Sprockets and trailers available for all chain sizes. Contact 4B for more information.



Typical Double Strand Chain Application



Feed Mill Application using Bolt 'N' Go Chain with Nylon Flights



UHMW Paddles on "T" Plate Flights – Drive End



UHMW Paddles & Return Buckets – Tail End