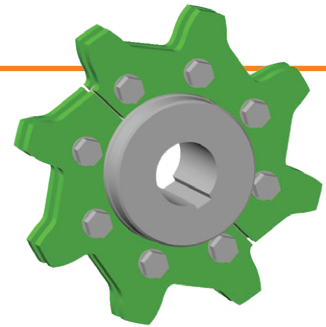
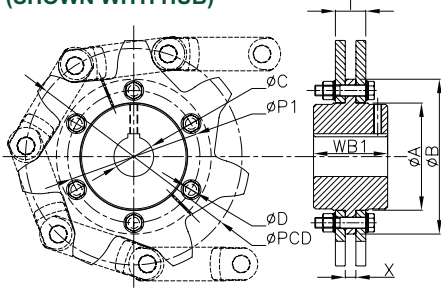


4B sprockets and trailers are manufactured from high grade heat treated steel to a minimum hardness of 57 HRC. Each piece is machined to size with appropriate bore and keyway specific to each customer's application. Most sizes are in stock and ready to ship from 4B's extensive inventory.

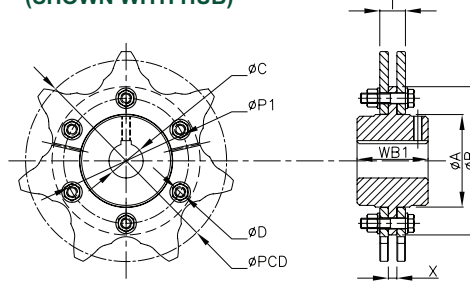


SPROCKETS

**STANDARD SPROCKET
(SHOWN WITH HUB)**



**WEAR REVERSIBLE SPROCKET
(SHOWN WITH HUB)**



Chain Link	No. of Teeth	Pitch Circle Dia ØPCD (mm)	ØP1 (mm)	ØA (mm)	ØB (mm)	ØC max, Sprocket/ Stub Trailer (mm)	ØD (mm)	No. of Bolts	T (mm)	X (mm)	WB1 (mm)
4B102NA	6	204.0	-	105.0	135.0	70	-	-	30	10	83
	7	235.1	146.0	108.0	173.0	70	M12	6	30	10	83
	8	266.5	170.0	144.0	196.0	85	M12	6	30	10	83
	9	298.2	200.0	174.0	232.0	105	M12	6	30	10	83
	10	330.1	241.3	179.0	264.0	105	M12	8	30	10	83
4B142NA	6	284.0	168.3	136.5	190.5	85	M12	6	46	16	112
	7	327.3	200.0	162.0	234.0	105	M16	6	46	16	112
	8	371.1	241.3	187.3	282.0	115	M20	8	46	16	127
	9	415.2	285.8	240.0	330.0	150	M20	8	46	16	127
	10	459.5	285.8	240.0	330.0	150	M20	8	46	16	127
	11	504.0	368.3	310.0	419.0	170	M20	8	46	16	150
	12	548.6	415.0	345.0	465.0	170	M20	8	46	16	150
	13	593.4	470.0	380.0	521.0	170	M20	8	46	16	150
4B142HA	7	327.3	200.0	162.0	234.0	105	M16	6	69	19	127
	8	371.1	241.3	187.3	282.0	115	M20	8	69	19	150
	9	415.2	285.8	240.0	330.0	150	M20	8	69	19	150
	10	459.5	285.8	240.0	330.0	150	M20	8	69	19	150
	11	504.0	368.3	310.0	419.0	170	M20	8	69	19	150
	12	548.6	415.0	345.0	465.0	170	M20	8	69	19	150
	13	593.4	470.0	380.0	520.0	170	M20	8	69	19	180
14	638.1	470.0	380.0	546.0	170	M20	10	69	19	180	

Bore and keyway to customer specification.

Sprockets and trailers available for all chain sizes. Contact 4B for more information.