

BOLT 'N' GO™



www.go4b.com

Forged Chain

The Bolt 'N' Go flight system is a revolutionary assembly method for drop forged chain. Link and flight assembly is made easy by using a standard bolt and mechanical lock nut with a high strength, heat treated hollow pin. There are no circlips and no intricate assembly is required. There is no welding of flights, no need to remove chain from the conveyor for installation, and no issues with strength. Just bolt the links and the flights together. It's easy, simple and reliable!

USA Pat. 7,080,728
Canadian Pat. 2,548,660
Mexican Pat. 272,056
Other Patents Pending

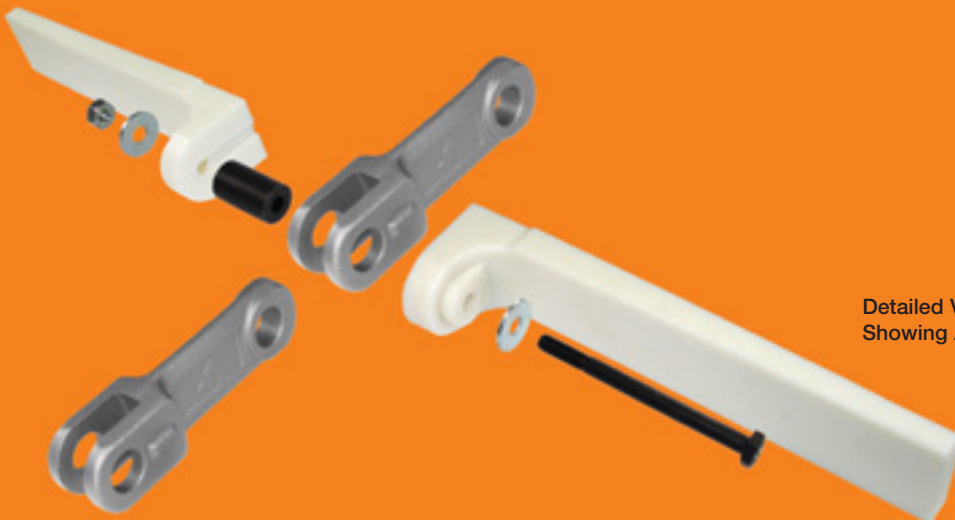


Bolt 'N' Go Link



Product Videos –
www.go4b.co.uk/uk/chains-and-sprockets.asp

Bolt 'N' Go System



Detailed View of Bolt 'N' Go
Showing Assembly Method

DROP FORGED CHAIN



Standard Link



4B's drop forged chain is made of special heat treated alloy steel, case hardened to Rockwell C57 - C62 with a ductile core hardness of Rockwell C40.

4B's superior heat treatment technique provides the optimum chain link with a more resilient ductile core for shock resistance, and an extremely hard exterior surface for superior wear resistance.

4B's drop forged chain is backed by an international network of companies with over 120 years of experience, and a global team of engineers and sales professionals that can provide you with practical solutions for all your material handling applications.

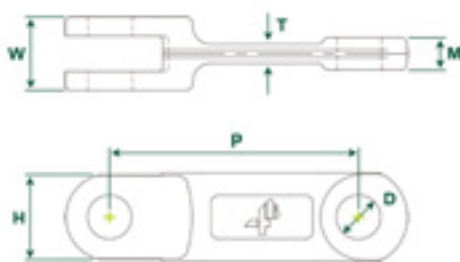


Chain Link	4B102NA	4B125NA	4B142NA	4B142HA	4B150NA	4B160NA	4B175NA	4B200NA	4B216NA	4B250NA	4B260NA
Minimum Breaking Load	180 kN 40,400 lb	200 kN 44,900 lb	300 kN 67,500 lb	450 kN 101,000 lb	300 kN 67,500 lb	350 kN 78,700 lb	520 kN 117,500 lb	600 kN 135,000 lb	600 kN 135,000 lb	700 kN 158,000 lb	700 kN 158,000 lb
Case Hardness	Rockwell C57-C62	Rockwell C57-C62	Rockwell C57-C62	Rockwell C57-C62	Rockwell C57-C62	Rockwell C57-C62	Rockwell C57-C62	Rockwell C57-C62	Rockwell C57-C62	Rockwell C57-C62	Rockwell C57-C62
Case Depth	0.5 mm	0.6 mm	0.7 mm	0.7 mm	0.7 mm	0.8 mm	1.0 mm	1.0 mm	1.0 mm	1.0 mm	1.0 mm
Core Hardness	Rockwell C40	Rockwell C40	Rockwell C40	Rockwell C40	Rockwell C40	Rockwell C40	Rockwell C40	Rockwell C40	Rockwell C40	Rockwell C40	Rockwell C40
Weight (Per Link)	0.38 kg	0.70 kg	1.08 kg	1.76 kg	1.20 kg	1.30 kg	2.73 kg	2.85 kg	3.66 kg	4.26 kg	5.38 kg
Bolt 'N' Go Compatible	Yes	Yes	Yes	Yes	Yes	Yes	No	Yes	No	No	No

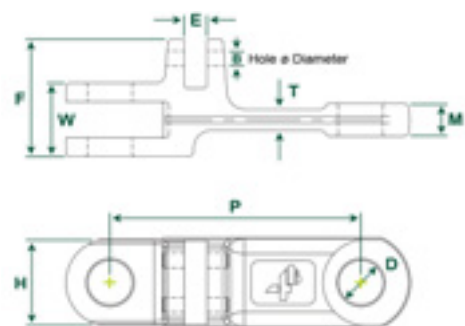
Dimensions

	4B102NA	4B125NA	4B142NA	4B142HA	4B150NA	4B160NA	4B175NA	4B200NA	4B216NA	4B250NA	4B260NA
P	102 mm	125 mm	142 mm	142 mm	150 mm	160 mm	175 mm	200 mm	216 mm	250 mm	260 mm
H	36 mm	35 mm	50 mm	50 mm	49 mm	44.5 mm	60 mm	60 mm	75 mm	75 mm	75 mm
T	7 mm	10 mm	12 mm	16.5 mm	13 mm	13 mm	16 mm	18 mm	19 mm	18 mm	21 mm
W	28 mm	36 mm	42 mm	62 mm	36 mm	42 mm	72 mm	68 mm	59 mm	70 mm	71 mm
M	12 mm	15 mm	18.7 mm	28.5 mm	15 mm	19.5 mm	22 mm	30 mm	26 mm	32 mm	31 mm
D	14 mm	16 mm	25 mm	25 mm	25 mm	20 mm	30 mm	30 mm	35 mm	32 mm	32 mm
F	-	-	-	-	-	-	-	-	-	-	-
E	-	-	-	-	-	-	-	-	-	-	-
B	-	-	-	-	-	-	-	-	-	-	-

Links and pins are available in all grades of stainless steel



Standard Link



Double Link

DOUBLE & TRIPLE LINKS

Double Link



Triple Link



Triple Configuration



Widths to 3.7m

4B's double and triple links are forged with the same quality, strength and durability as our standard links.

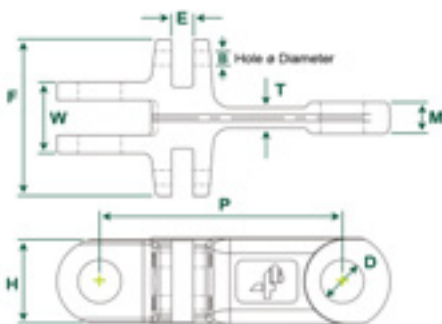


4B142DNA | 4B142DHA | 4B142TNA | 4B142THA | 4B175DNA

300 kN 67,500 lb	450 kN 101,000 lb	300 kN 67,500 lb	450 kN 101,500 lb	520 kN 117,500 lb
Rockwell C57-C62	Rockwell C57-C62	Rockwell C57-C62	Rockwell C57-C62	Rockwell C57-C62
0.7 mm	0.7 mm	0.7 mm	0.7 mm	1.0 mm
Rockwell C40	Rockwell C40	Rockwell C40	Rockwell C40	Rockwell C40
1.37 kg	2.00 kg	1.67 kg	2.32 kg	3.17 kg
No	No	No	No	No

Dimensions

142 mm	142 mm	142 mm	142 mm	175 mm
50 mm	50 mm	50 mm	49 mm	60 mm
12 mm	16 mm	12 mm	16 mm	16 mm
42 mm	62 mm	42 mm	62 mm	72 mm
18.7 mm	28 mm	18.7 mm	28.5 mm	22 mm
25 mm	25 mm	25 mm	25 mm	30 mm
67 mm	87 mm	92 mm	112 mm	96 mm
13 mm	13 mm	13 mm	13 mm	17 mm
8.5 mm	8.5 mm	8.5 mm	8.5 mm	10.5 mm



Triple Link

WELDED FLIGHTS & PINS



www.go4b.com

FREE Engineering Design Service
- Contact 4B

TYPICAL WELDED FLIGHT ATTACHMENTS



Square Bar Flight



Flat Bar Flight



Paddle Flight



U Flight



Closed U Flight



Closed U Flight with Filler Plates



OO Flight



OO Flight with Filler Plates



Return Cups

Note:
Custom flights are available, based on customer specifications.

STANDARD PIN OPTIONS

Note: Clamps, roll pins, hex bolts and lock nuts must not be re-used. Install one time and discard after use.



Forged Head Pin, Collar and Roll Pin

Forged Head Pin and One Clamp

Plain Pin and Two Clamps

Bolt 'N' Go Hollow Pin, Bolt, Washers and Nut

BOLT 'N' GO™

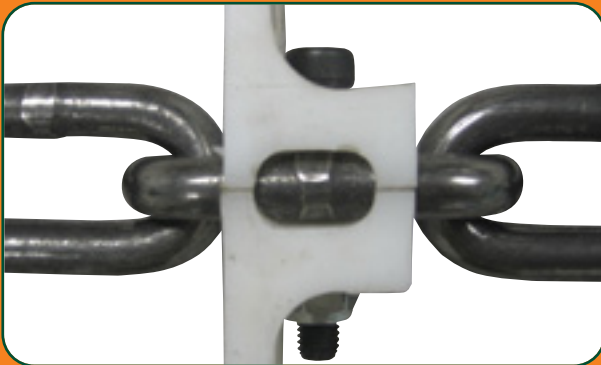
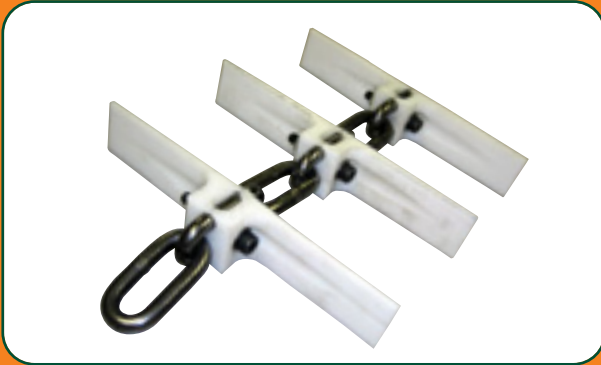
Round Link Chain

Easy flight assembly by using a standard bolt and nut, connecting the flights directly to the link. The chain can be supplied in a coil together with the bolt-on flights already assembled.



Round Link Chain with Bolt 'n' Go Flights

Bolt 'N' Go - Round Link Chain
Size 13 x 65mm



FREE Engineering Design Service - Contact 4B

ACCESSORIES

For more details please visit
www.go4b.com



www.go4b.com

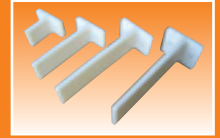
NYLON FLIGHTS FOR SCRAPER CHAINS



'L' Shape with 1
fixing hole



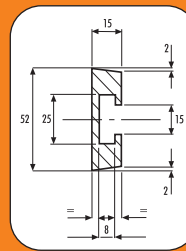
'L' Shape with 2
fixing holes



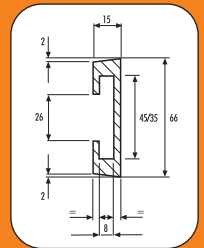
'T' Shape with 2
fixing holes

- Easy to install or replace, cutting down installation and maintenance costs
- Eliminates the need for a bottom liner in the conveyor
- Reduces conveyor noise.

NYLON FLIGHT SLEEVES FOR 102 NA CHAIN and 142 NA CHAIN



102 NA



142 NA



ROUND LINK CHAIN



ON DEMAND
Separate datasheets available

MISCELLANEOUS CONVEYOR CHAIN



ON DEMAND
Separate datasheets available