

# STEEL WEB

The 4B Steel Web Belt is a rubber elevator belt with a special steel cord core. The cords provide low elongation with high elasticity in the length, and cross rigidity in the width. The built-in elasticity allows running over slightly crowned pulleys which greatly improves belt tracking, and helps to avoid belt wandering which is often the reason for elevators shutting down. The rigid weft cords act as a barrier to ripping and tearing which increases the holding ability for the bucket bolts. This produces a good cross rigid belt resulting in excellent straight tracking characteristics.

In contrast, most conventional steel cable belts lack elasticity and consequently have to run over truly flat, cylindrical pulleys which increases the risk of belts off-tracking.

The 4B Steel Web Belt is designed for heavy duty/industrial bucket elevator applications with long centre distances that require stable running and reliable belts with high safety factors. All 4B Steel Web Belts are manufactured in accordance with DIN 22102 and ISO norms.

## TECHNICAL SPECIFICATIONS

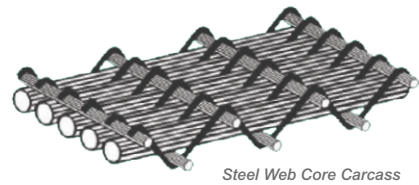
**For tall, high tonnage industrial elevators.  
Steel cord keeps belt stretch to a minimum.**

- > Strength - up to 2,500 kN/m
- > Covers 3 + 3 or 4 + 4
- > Elongation at maximum working load 0.5%
- > Temperature resistant up to 130°C continuous
- > Anti static
- > Bolt holes to customer specification

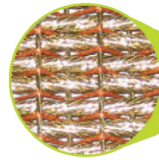
**Temperature Range -20°C to +130°C**



## STEEL WEB BELT



Steel Web Core Carcass



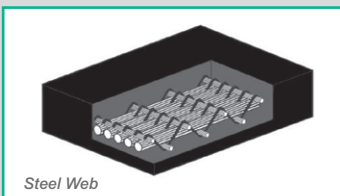
Detailed View of Steel Web Core

STANDARD RANGE	COVERS (MM)	BELT THICKNESS (MM)	MINIMUM PULLEY Ø (MM)	APPROX WEIGHT (KG/M <sup>2</sup> )
SW 800	3+3	12.0	500	18.0
SW 1000	3+3	12.0	500	18.7
SW 1250	3+3	13.0	630	21.0
SW 1400	4+4	15.0	630	24.5
SW 1600	4+4	15.0	630	25.0
SW 1800	4+4	15.0	630	25.5
SW 2000	4+4	15.0	800	26.0
SW 2500*	5+5	18.0	800	32.5

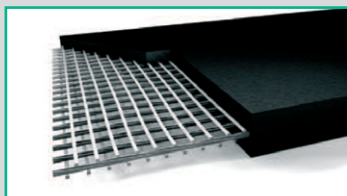
\* On special offer

### Other types on demand:

- > Type 1 - highly abrasion resistant with a maximum service temperature of 100°C
- > Type 2 - abrasion resistant with a maximum service temperature of 130°C. Continuous short peaks at 150°C
- > Type 3 - oil and fat resistant, anti static and flame retardant ISO 340



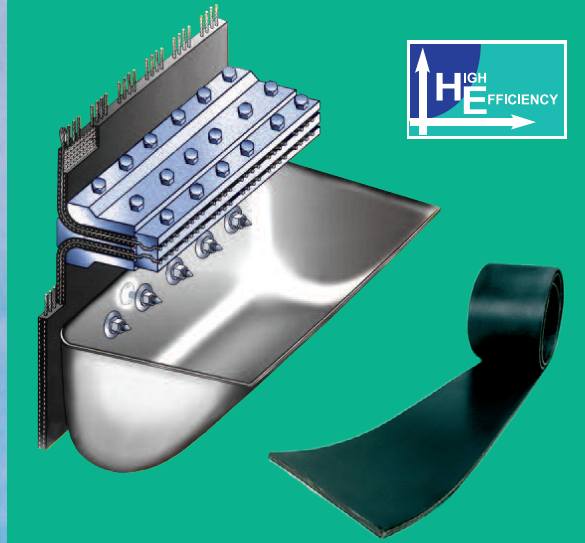
Steel Web



Use with BC Clamp - see p.14



# SJ BUCKETS / BC CLAMP / STEEL WEB BELT



## High Capacity System

A proven solution for the heavy industry.

4B can offer an integrated system of Steel Web Belting, SJ Pressed Steel Buckets and free engineering for elevator designs with compact industrial elevators.

### Advantages:

- > Savings of up to 33% on component costs
- > Heavy duty but lighter weight system
- > Taller elevators are possible (up to 150m)
- > Low maintenance costs
- > Higher belt speeds are possible
- > Closer bucket spacing
- > Higher capacity and efficiency



Braime Clamp Belt Splice on 4B Steel Web Core Belt



Starco Jumbo Buckets on 4B Steel Web Core Belt Cement Application



For more detailed product information, please visit:  
[www.go4b.com](http://www.go4b.com)