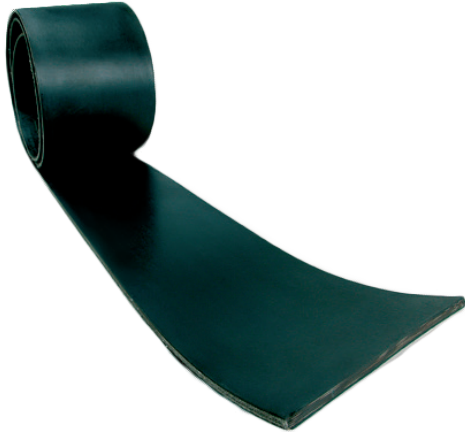


LOW STRETCH ELEVATOR BELTING - OIL RESISTANT



NBR Nitrile provides good resistance to oil and fat. Suitable for products containing oils and fat up to 100°C.

- > 100% Nitrile covers with Nitrile interplies
- > Tested using ASTM3 / IRM 903 Reference Oils


Applications

- > For products containing oils and fats up to 100°C

Covers

- > NBR 100% Nitrile Butadiene Synthetic Rubber

Temperature Range

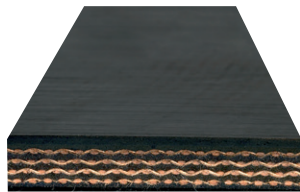
- > -25°C to +100°C 

Carcass

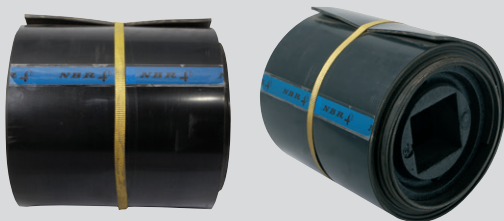
- > Polyester fabric warp and polyamide fabric weft plies (EP) separated by 0.3mm thick oil resistant synthetic rubber laminates

Standard

- > Manufactured to BS 490, DIN 22102 and DIN 22104 standard



TYPE		EP500/3 1+1 NBR	EP630/4 1.5+1.5 NBR	EP800/4 2+2 NBR	EP1000/5 2+2 NBR	EP1250/5 2+2 NBR	EP1600/5 2+2 NBR
Strength per ply	kN/m	160	160	200	200	250	315
Number of plies	-	3	4	4	5	5	5
Total Tensile Strength	kN/m	500	630	800	1000	1250	1600
Maximum Working Tension (10:1 Safety Factor)	kN/m	50	63	80	100	125	160
Top & Bottom Cover Thickness	mm	1.0	1.5	2.0	2.0	2.0	2.0
Belt Thickness	mm	6.0	8.0	9.5	11.0	12.5	13.5
Weight	kg/m ²	7.6	10.2	12.0	13.9	15.6	17.5
Minimum Pulley Ø	mm	315	500	500	800	800	1000



NBR Quality Information
 ASTM #1 = 1RM 901
 ASTM #3 = 1RM 903
 Test: 70hrs @ 100°C
 +/- 10% ΔV
 + 20% ΔV (max)