

TYPE C MEDIUM DEEP PATTERN

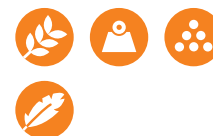
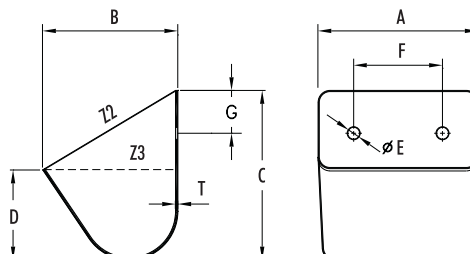
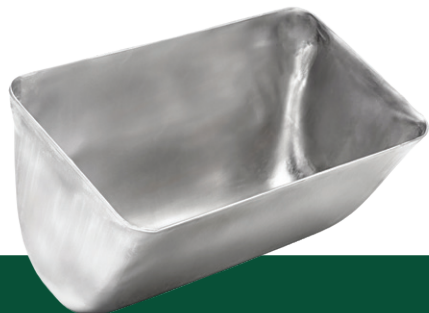
Pressed Seamless Steel.

- > For free flowing materials
- > For other materials at slower speeds



PRESSED SEAMLESS STEEL

Agricultural & Industrial



No.	A (mm)	B (mm)	C (mm)	D (mm)	T (mm)	Capacity (Litres)			Bolt Holes				
						(kg)	Z2 (total)	Z3 (water)	No.	E (Ø mm)	F (mm)	G (mm)	
C240	89	79	92	51	1.2	0.18	0.35	0.21	To customer specification	2	7.0	54	38
C14	102	79	92	51	2.0	0.36	0.40	0.24					
C16	127	79	92	51	1.2	0.25	0.49	0.30					
C19	127	79	92	51	3.0	0.50	0.49	0.30					
C22	152	79	92	51	1.5	0.36	0.59	0.36					
C22P	152	79	92	51	1.5	0.36	0.59	0.36					
C27	102	89	108	57	2.0	0.39	0.52	0.32					
C30	127	89	108	57	1.2	0.29	0.66	0.40					
C33	127	89	108	57	3.0	0.68	0.66	0.40					
C37	152	89	108	57	2.0	0.53	0.78	0.50					
C38	152	89	108	57	3.0	0.79	0.78	0.50					
C42	178	89	108	57	2.0	0.68	0.96	0.60					
C193	140	95	111	57	1.2	0.32	0.79	0.46					
C98	127	102	127	67	1.2	0.34	0.89	0.55					
C104	152	102	127	67	1.5	1.02	1.10	0.66					
C116	203	102	127	67	3.0	1.25	1.50	0.92					
C119	229	102	127	67	1.5	0.79	1.80	1.10					
C123	127	114	143	76	1.2	0.43	1.15	0.70					
C129	152	114	143	76	1.5	0.61	1.35	0.85					
C131	152	114	143	76	3.0	1.16	1.35	0.85					
C135	178	114	143	76	1.5	0.68	1.60	1.00					
C138	178	114	143	76	3.0	1.34	1.60	1.00					
C141	203	114	143	76	1.5	0.73	1.81	1.06					
C144	203	114	143	76	3.0	1.45	1.81	1.06					
C154	254	114	143	76	1.5	0.93	2.30	1.40					
C156	254	114	143	76	3.0	1.81	2.30	1.40					
C159	152	140	159	95	2.0	1.07	1.80	1.20					
C162	178	140	159	95	1.5	0.84	2.15	1.40					
C166	203	140	159	95	1.5	0.95	2.45	1.65					
C168	203	140	159	95	3.0	1.72	2.45	1.65					
C170	229	140	159	95	1.5	1.07	2.85	1.85					
C171	229	140	159	95	2.0	1.36	2.85	1.85					
C172	229	140	159	95	3.0	1.97	2.85	1.85					
C175	254	140	159	95	2.0	1.43	3.10	2.00					
C176	254	140	159	95	3.0	2.04	3.10	2.00					
C179	279	140	159	95	1.5	1.20	3.55	2.35					
C181	279	140	159	95	3.0	1.86	3.55	2.35					
C184	305	140	159	95	2.0	1.77	4.05	2.70					
C185	305	140	159	95	3.0	2.54	4.05	2.70					
C231	356	181	181	117	3.0	3.61	6.55	4.70					